



8. HRVATSKI  
FORUM  
O ODRŽIVOJ  
GRADNJI

Jesmo li  
dovoljno  
inovativni da  
privučemo  
fondove?

Subota, 6.12.2014.





8. HRVATSKI  
FORUM  
O ODRŽIVOJ  
GRADNJI

# ZELENI BAGDAD

Ana Ljubičić, bacc. ing. aedif.

Mia Martinović, bacc. ing. aedif.

Matija Romić, bacc. ing. arh.



TRG BANA  
JELAČIĆA

KVATRIĆ





# URBANA AGRİKULTURA

„Industrija koja proizvodi, prerađuje i distribuira hranu i gorivo, uvelike kao odgovor na dnevne potražnje korisnika unutar gradova, koja se proteže kroz gradske i prigradske površine, upotrebljavajući metode intenzivne proizvodnje te koristeći prirodne resurse i reciklirajući gradski otpad za stvaranje raznolikog asortimana biljnih i životinjskih prehrambenih proizvoda.“

## Prednosti

### Zdravlje

- Dostupnost zdrave hrane
- Edukacija o važnosti zdrave prehrane
- Zdrava prehrana
- Fizička aktivnost

### Sociološki aspekt

- Mobilizacija
- Edukacija mladih
- Integracija starije populacije
- Socijalizacija susjeda

### Ekonomija

- Mikroekonomija
- Otvaranje novih radnih mjesta

### Ekologija

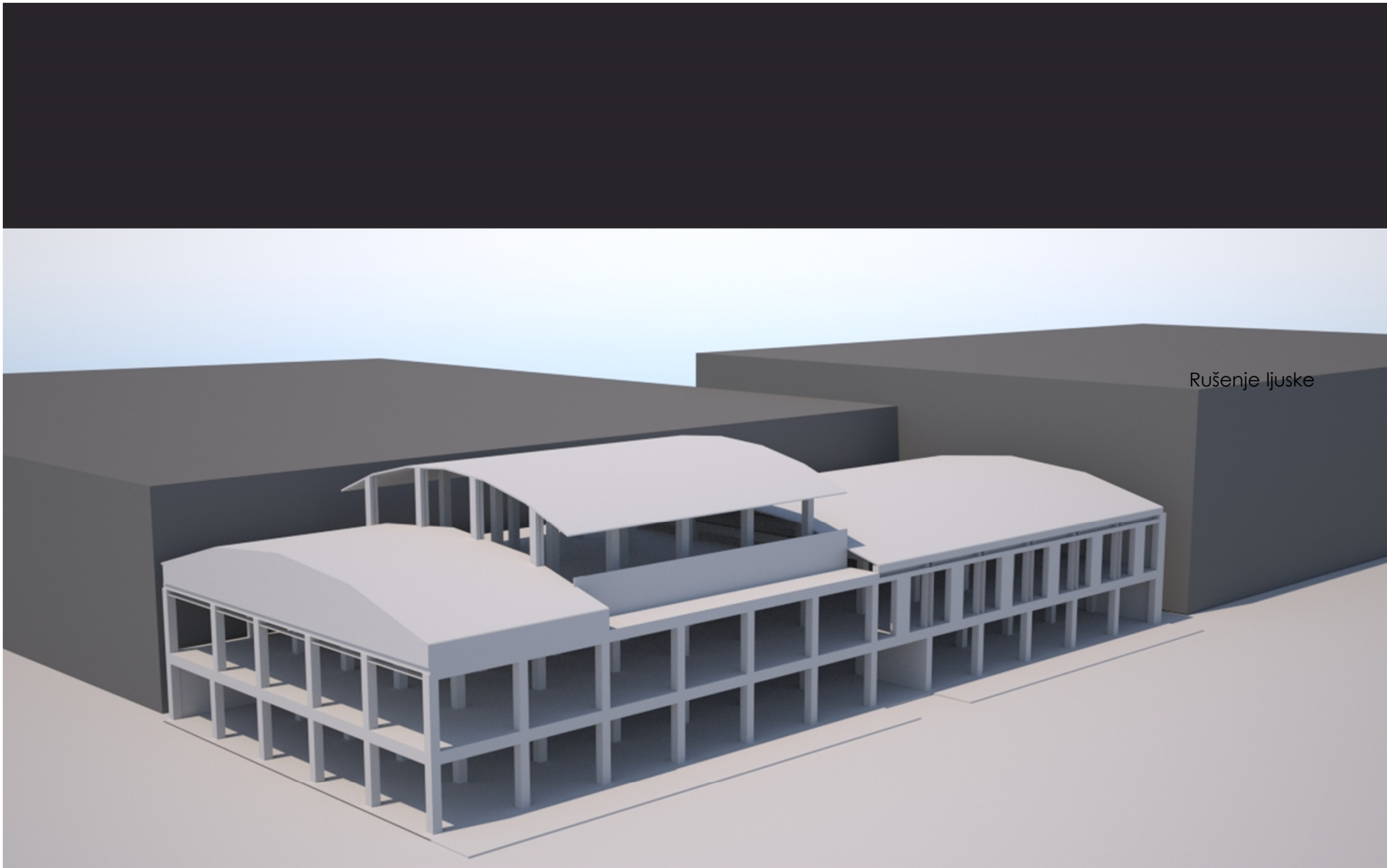
- Zelene površine
- Pročišćavanje zraka
- Smanjenje emisije CO2
- Korištenje kišnice
- Kompostiranje ostataka hrane
- Korištenje obnovljivih izvora energije (solarna i biotermalna e.)

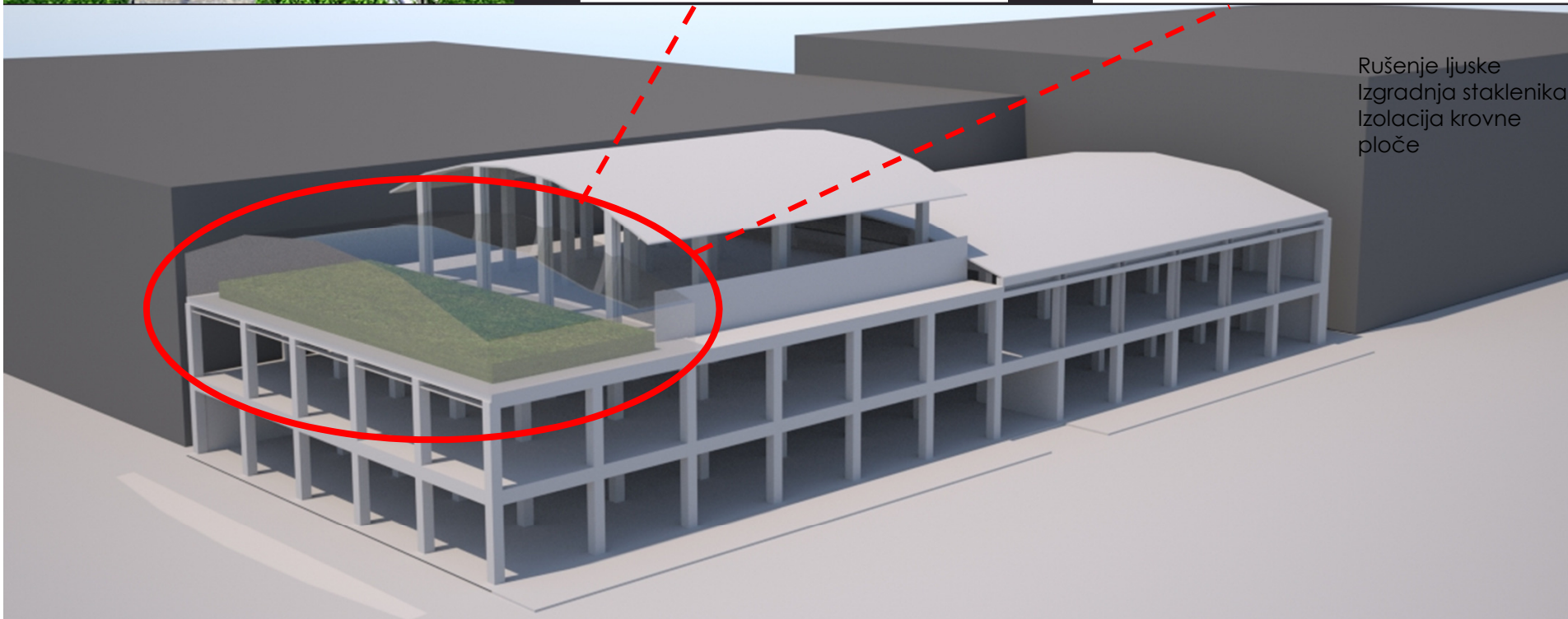
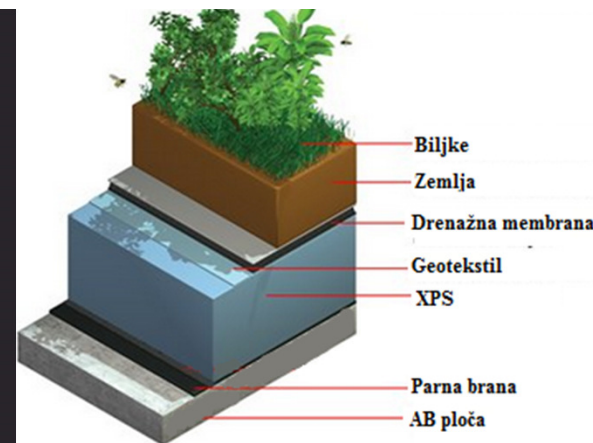
Farme raznih ustanova

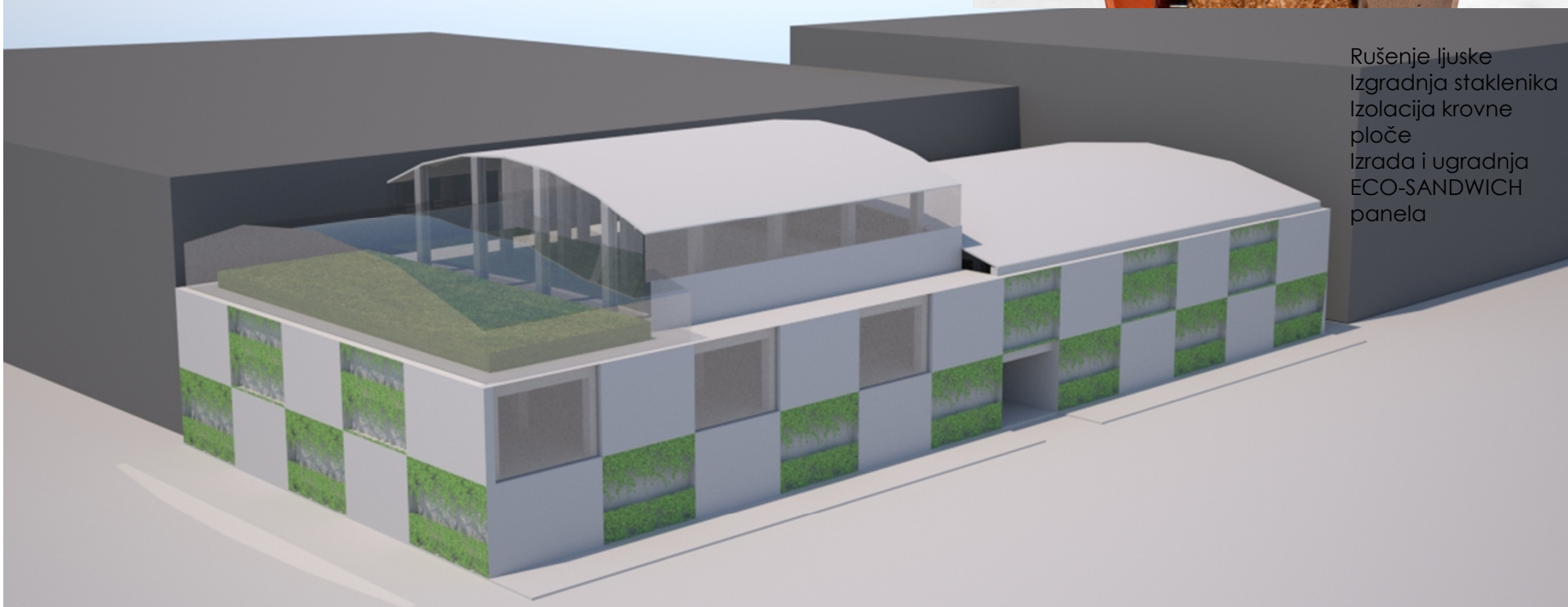
Komercijalne farme

Farme zatvorenog tipa

Gradski vrtovi



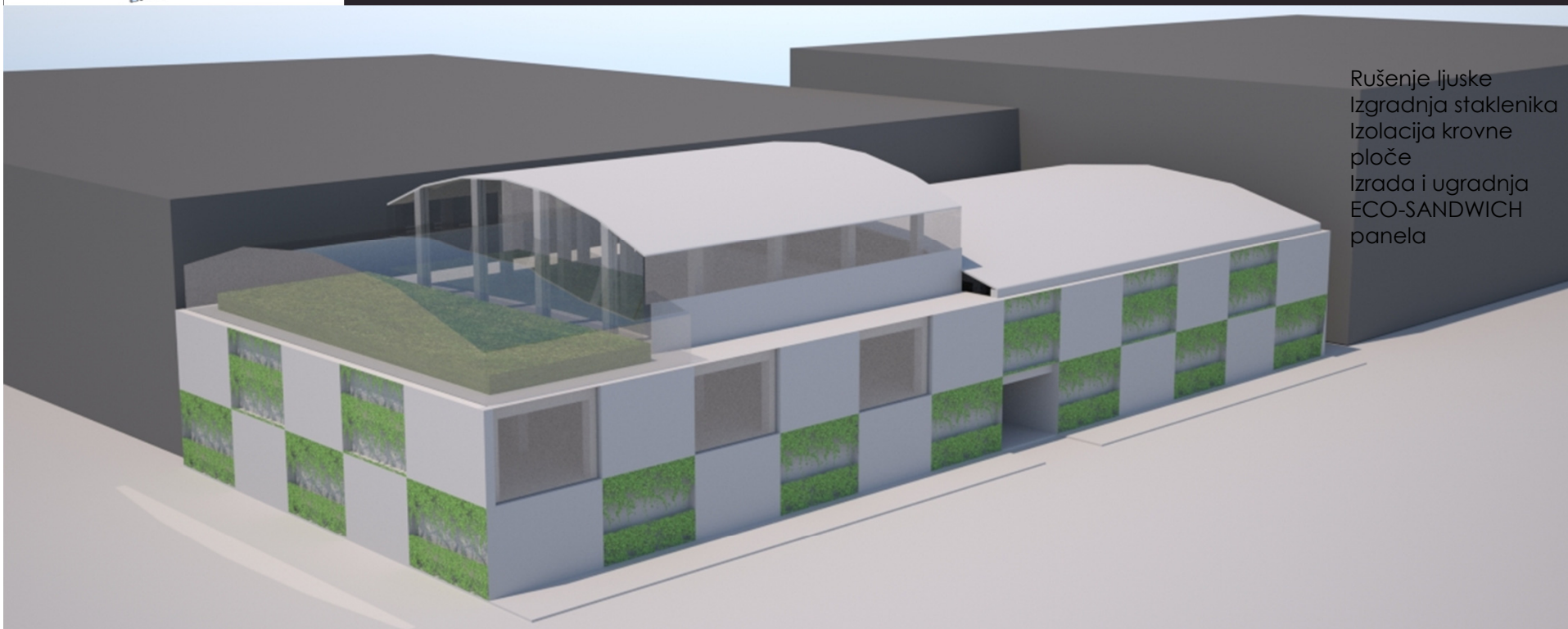
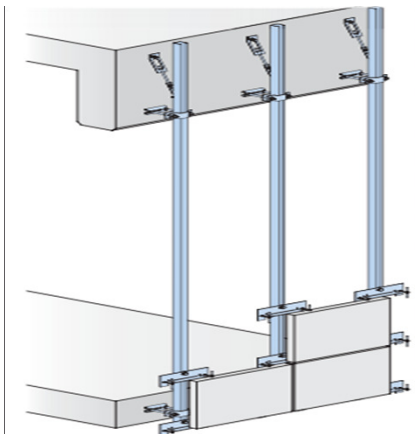




Rušenje ljuske  
Izgradnja staklenika  
Izolacija krovne  
ploče  
Izrada i ugradnja  
ECO-SANDWICH  
panela





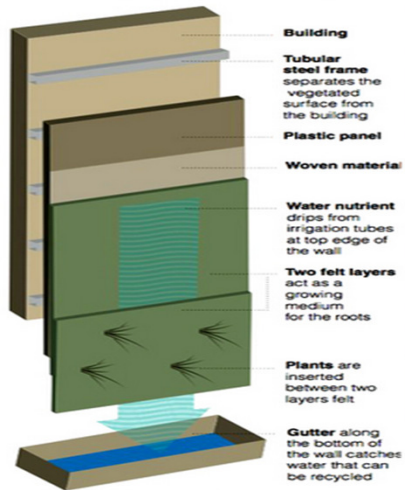


Rušenje ljuske  
Izgradnja staklenika  
Izolacija krovne  
ploče  
Izrada i ugradnja  
ECO-SANDWICH  
panela



## Green Wall

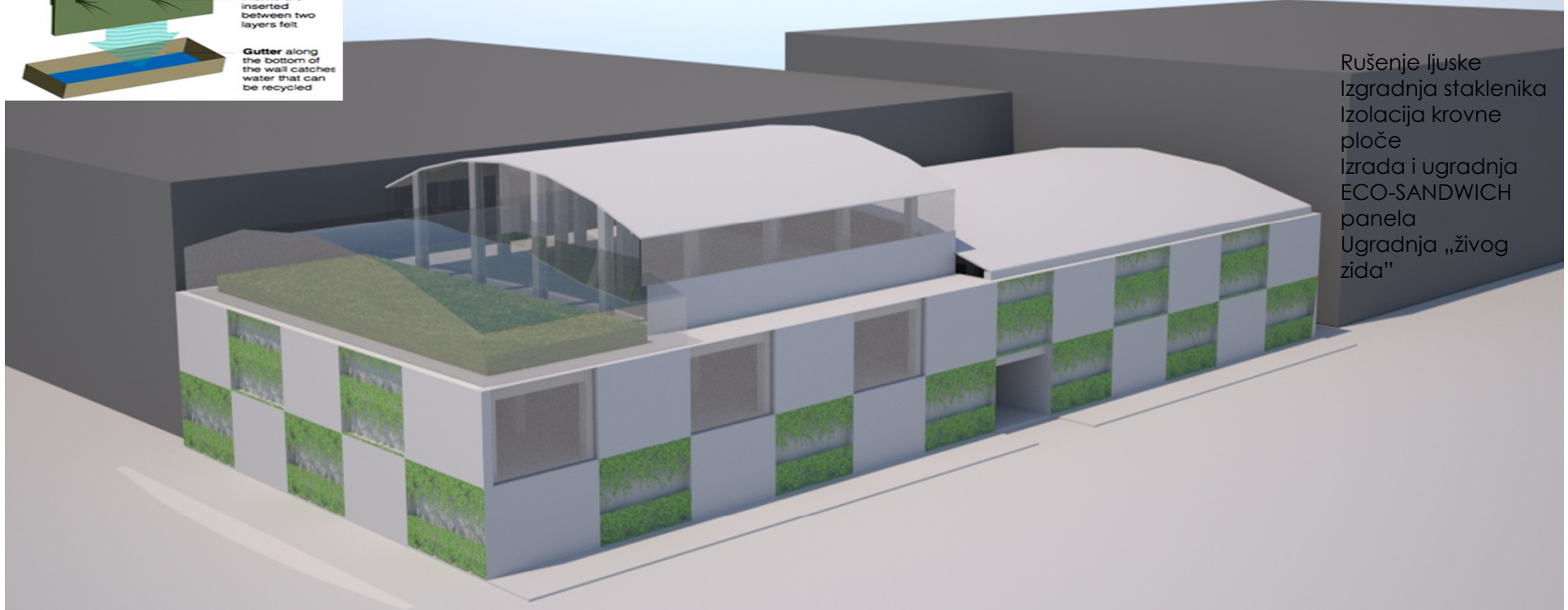
Vertical gardens based on Patrick Blanc's design mainly consist of a water source at the top and a dirtless surface that absorbs the water, providing a place for the plants to grow.

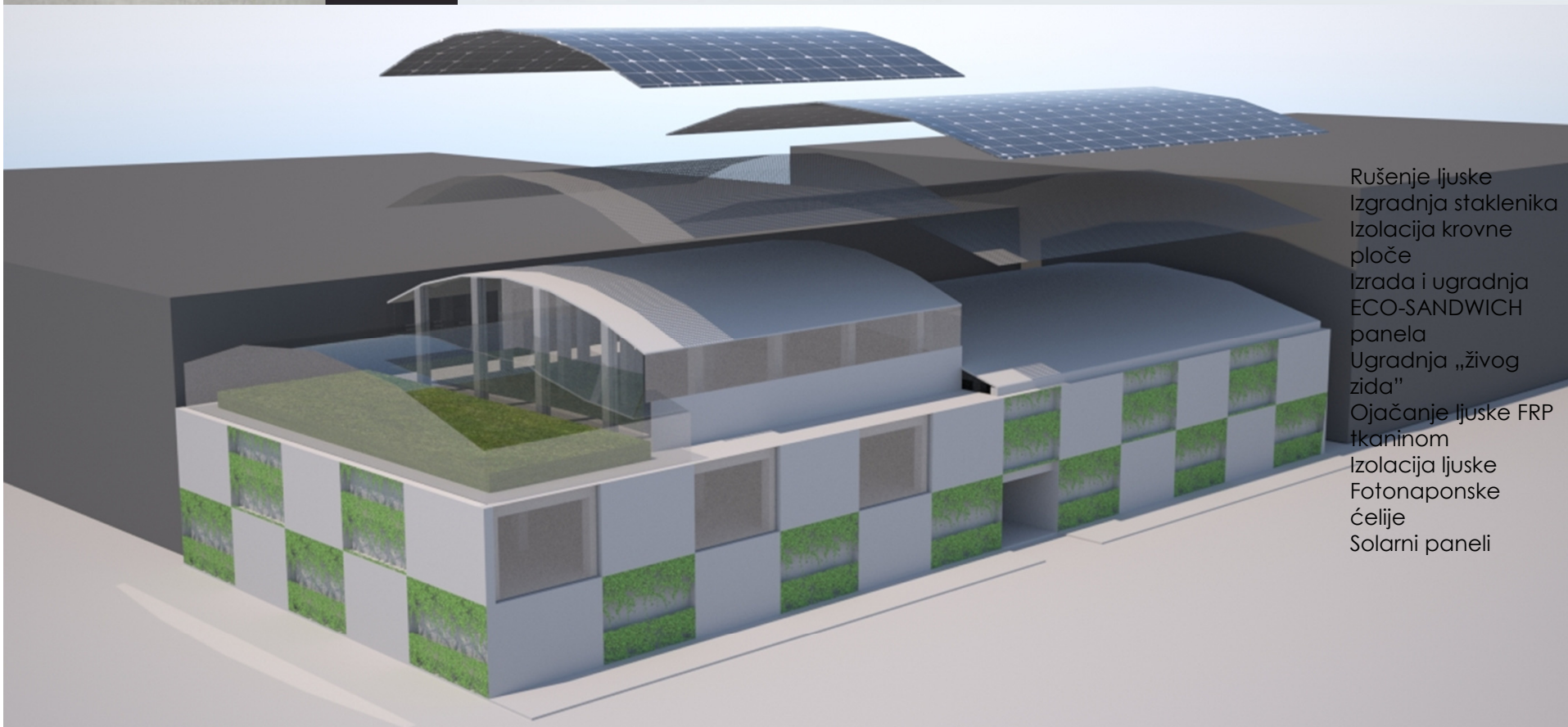
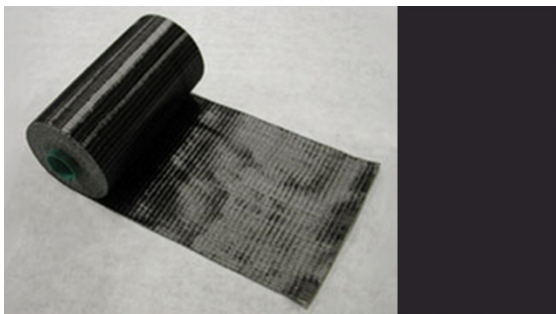


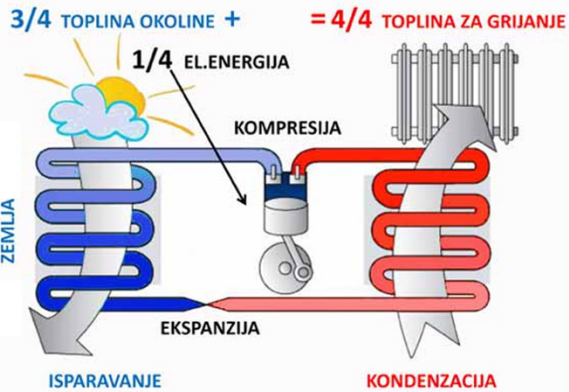
## REDUCED ENERGY COSTS



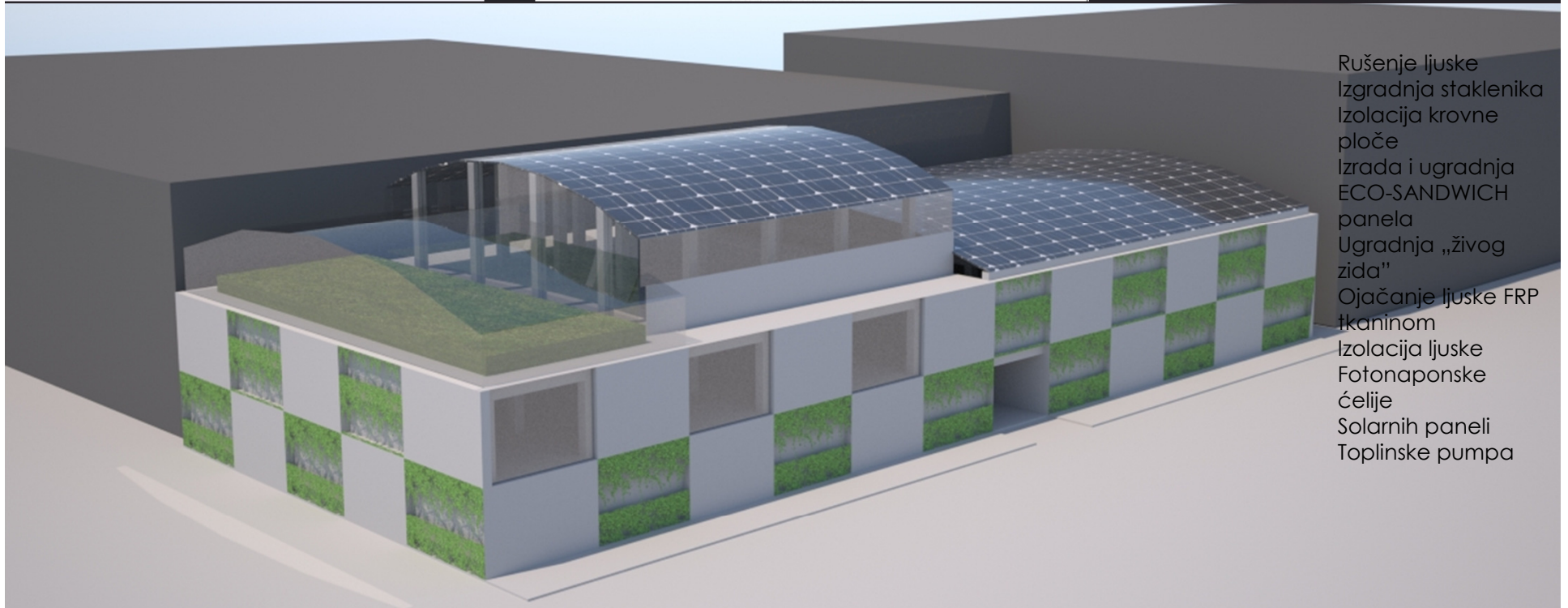
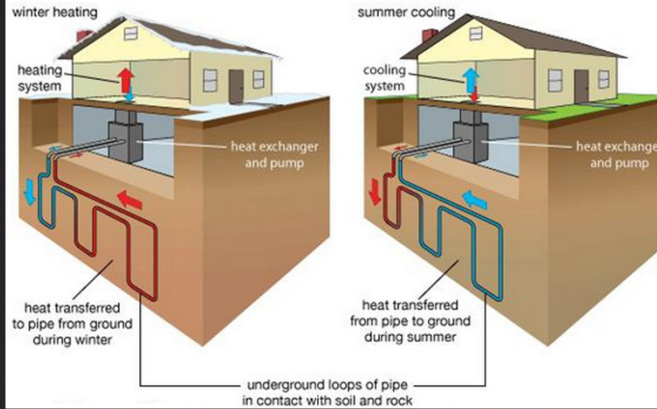
## REDUCED NOISE LEVELS



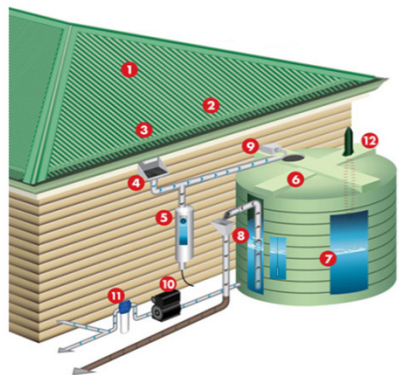




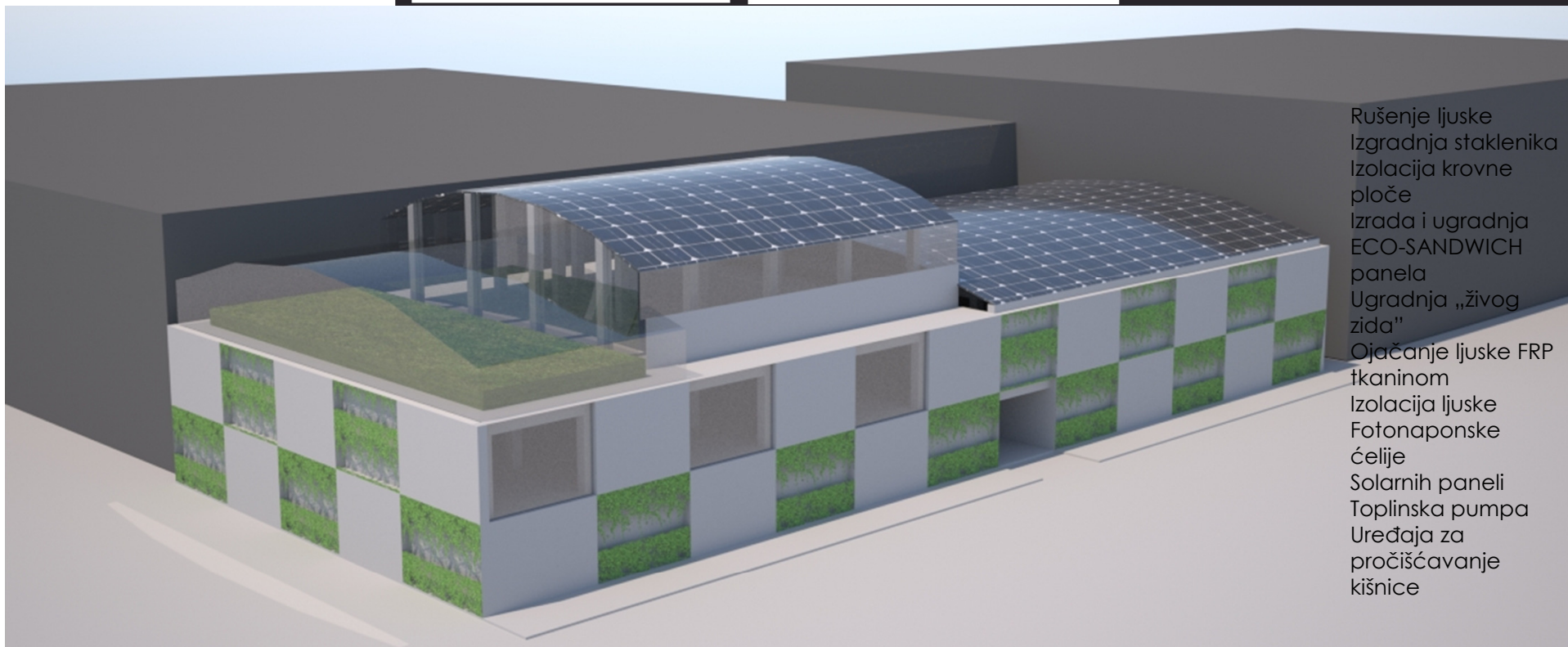
#### Residential heat pump



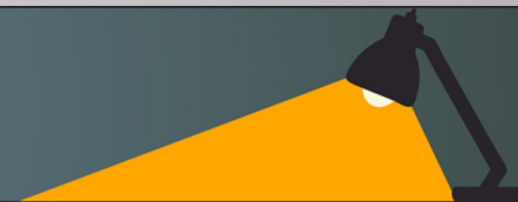
Rušenje ljuske  
 Izgradnja staklenika  
 Izolacija krovne ploče  
 Izrada i ugradnja ECO-SANDWICH panela  
 Ugradnja „živog zida“  
 Ojačanje ljuske FRP tkaninom  
 Izolacija ljuske Fotonaponske ćelije  
 Solarnih paneli  
 Toplinske pumpa

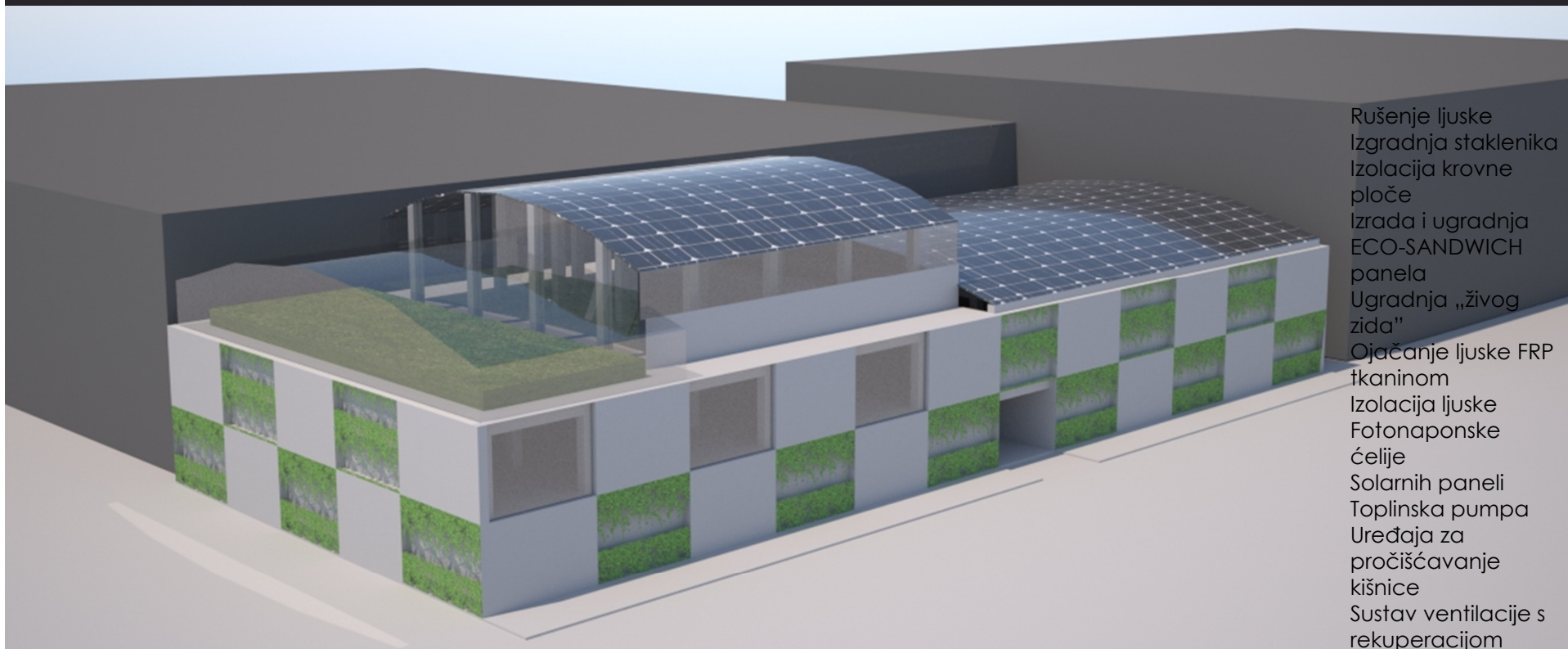
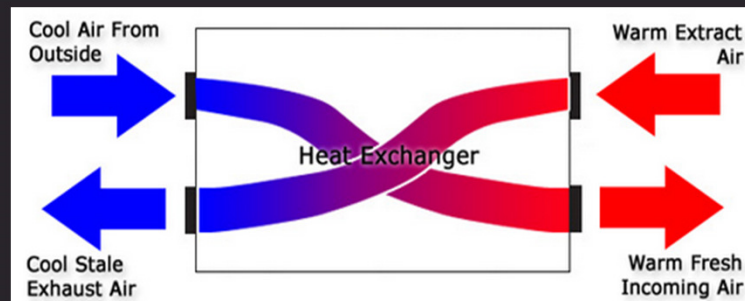


- |          |                        |           |  |
|----------|------------------------|-----------|--|
| <b>1</b> | Collection Surface     | <b>7</b>  | Collection Cistern                     |
| <b>2</b> | Collection Gutters     | <b>8</b>  | Overflow Port                          |
| <b>3</b> | Gutter Protection      | <b>9</b>  | Auto-fill / Automatic Top-up Mechanism |
| <b>4</b> | Rain Head Inlet Filter | <b>10</b> | Pump                                   |
| <b>5</b> | First-flush Diverter   | <b>11</b> | Water Filter                           |
| <b>6</b> | Inlet Screen           | <b>12</b> | Water Level Indicator                  |



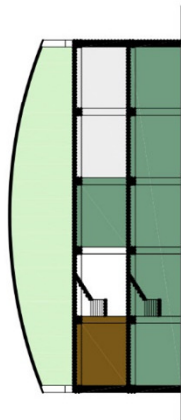
Rušenje ljuske  
 Izgradnja staklenika  
 Izolacija krovne ploče  
 Izrada i ugradnja ECO-SANDWICH panela  
 Ugradnja „živog zida“  
 Ojačanje ljuske FRP tkaninom  
 Izolacija ljuske  
 Fotonaponske ćelije  
 Solarnih paneli  
 Toplinska pumpa  
 Uređaja za pročišćavanje kišnice



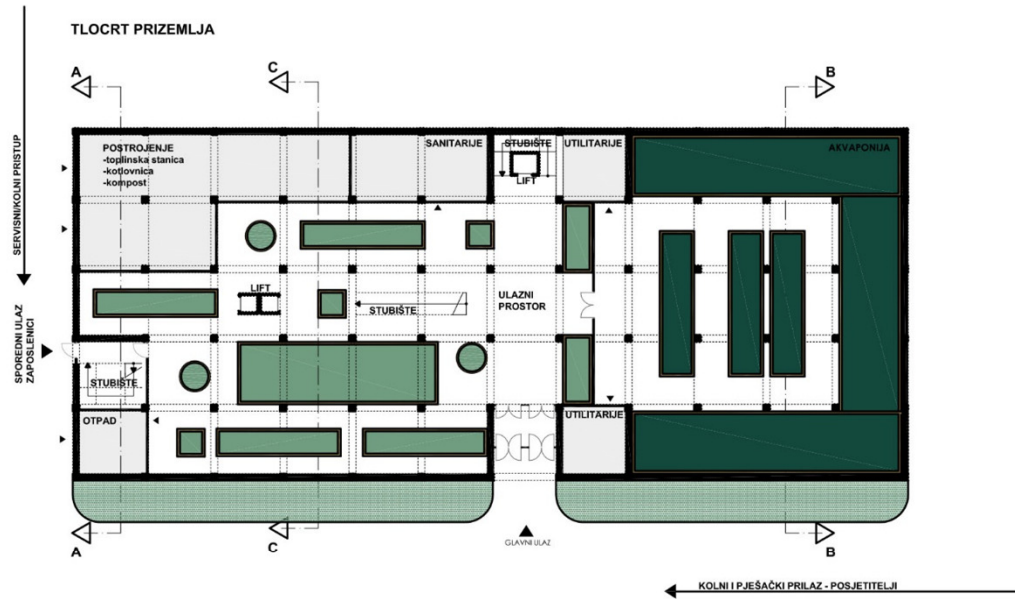


Rušenje ljuske  
 Izgradnja staklenika  
 Izolacija krovne ploče  
 Izrada i ugradnja ECO-SANDWICH panela  
 Ugradnja „živog zida“  
 Ojačanje ljuske FRP tkaninom  
 Izolacija ljuske Fotonaponske ćelije  
 Solarnih paneli  
 Toplinska pumpa  
 Uređaja za pročišćavanje kišnice  
 Sustav ventilacije s rekuperacijom

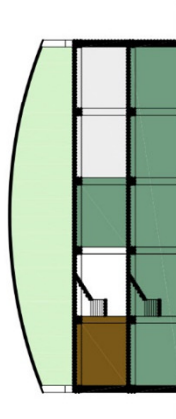
PRESJEK A-A



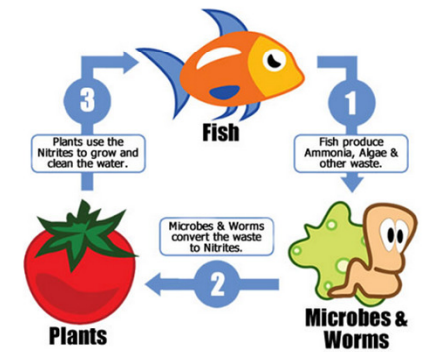
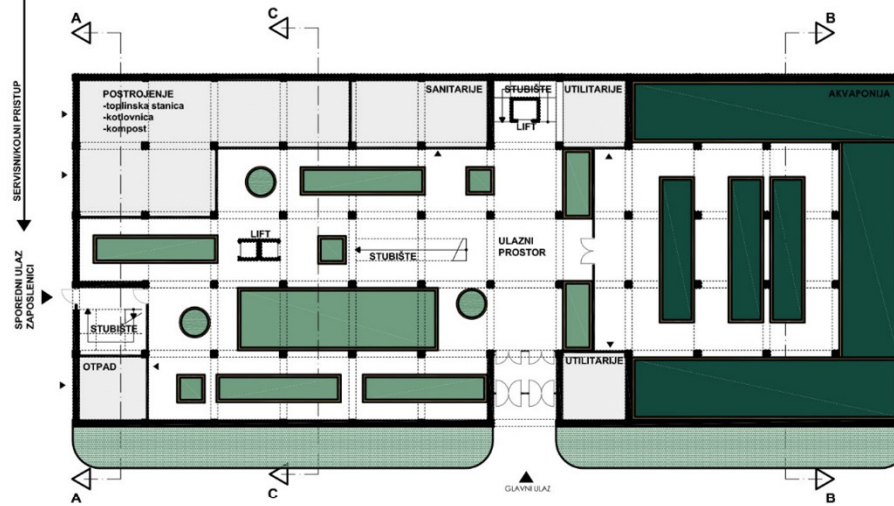
TLOCRT PRIZEMLJA



PRESJEK A-A



TLOCRT PRIZEMLJA



← KOLNI I PJEŠAČKI PRILAZ - POSJETITELJI

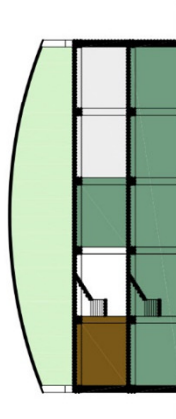




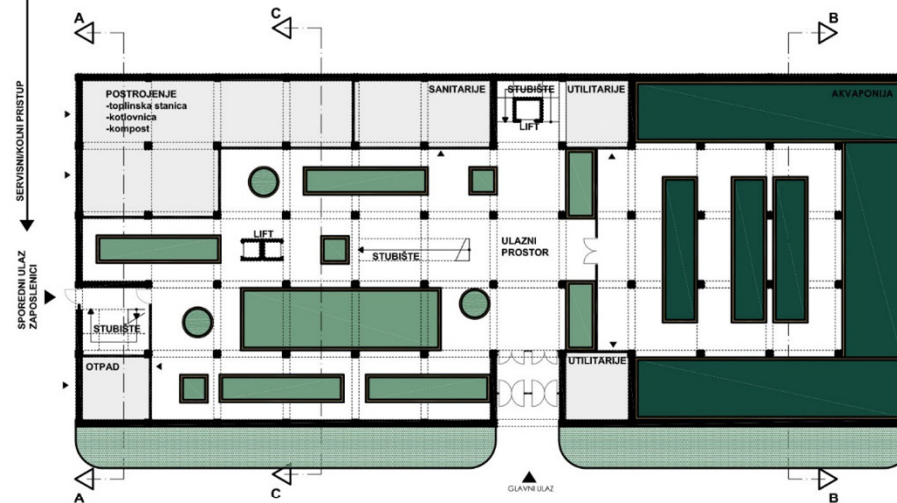


- 1500 m<sup>2</sup> obradive površine
  - 200 tona proizvoda godišnje
  - opskrbljuje 2500 stanovnika
- } po etaži

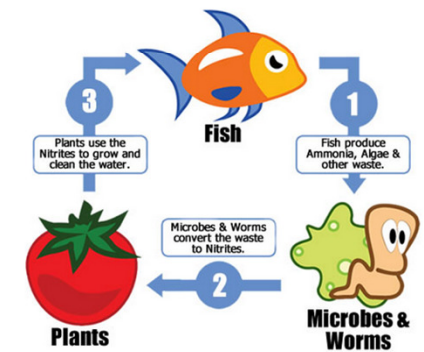
PRESJEK A-A



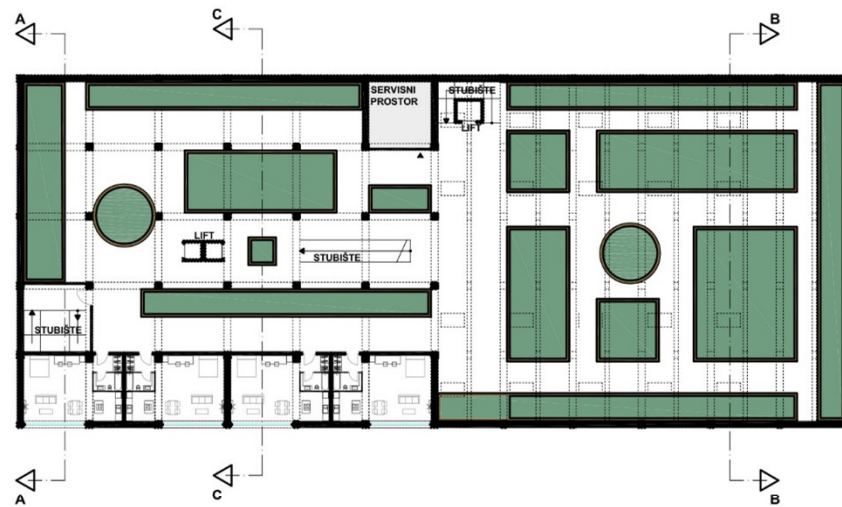
TLOCRT PRIZEMLJA



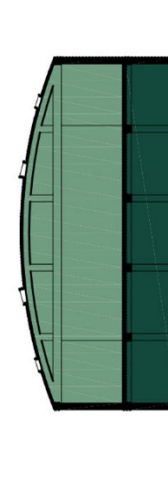
← KOLNI I PJEŠAČKI PRILAZ - POSJETITELJI

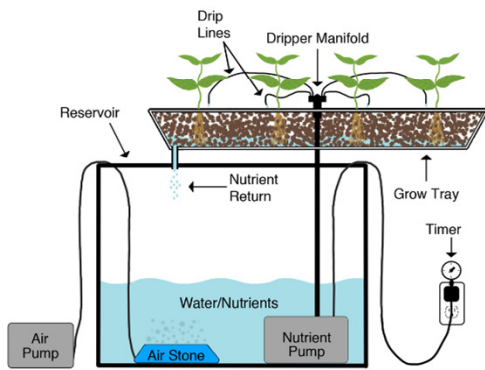


TLOCRT KATA

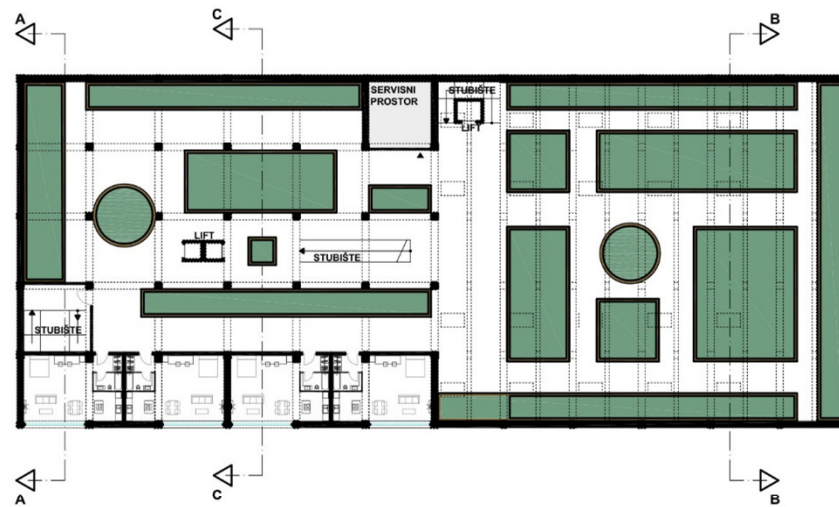


PRESJEK B-B

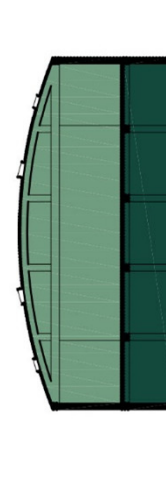


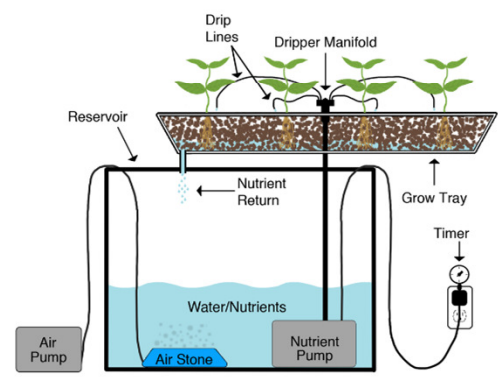


TLOCRT KATA

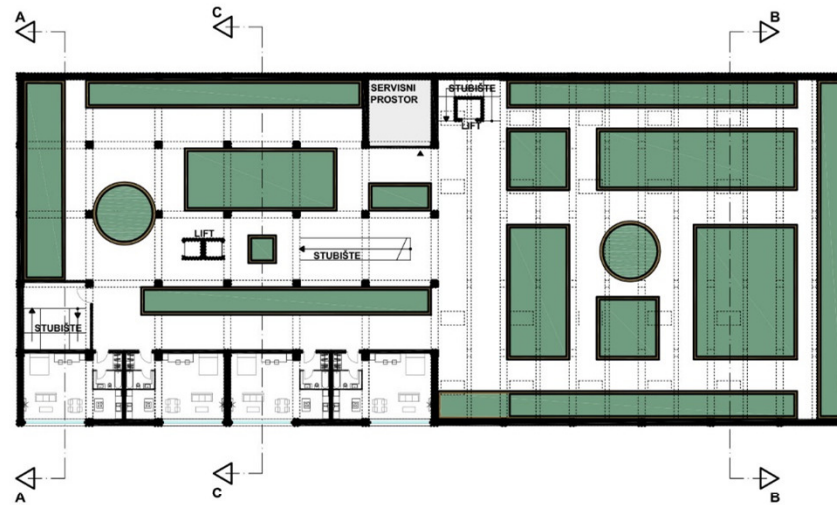


PRESJEK B-B

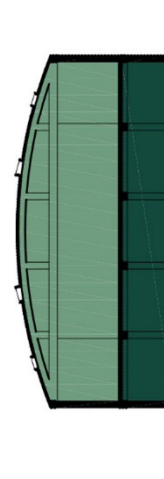




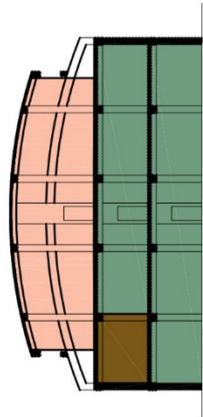
TLOCRT KATA



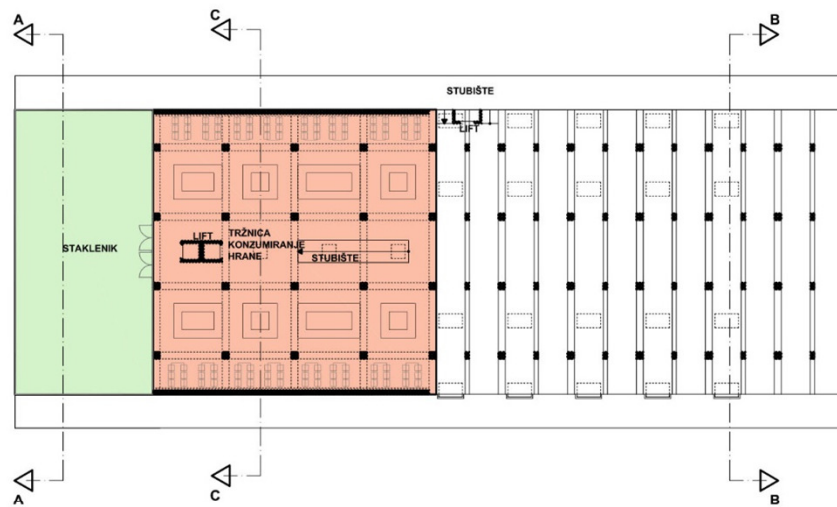
PRESJEK B-B



PRESJEK C-C

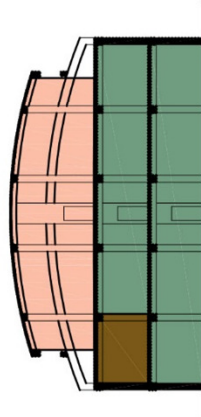


TLOCRT 2. KATA

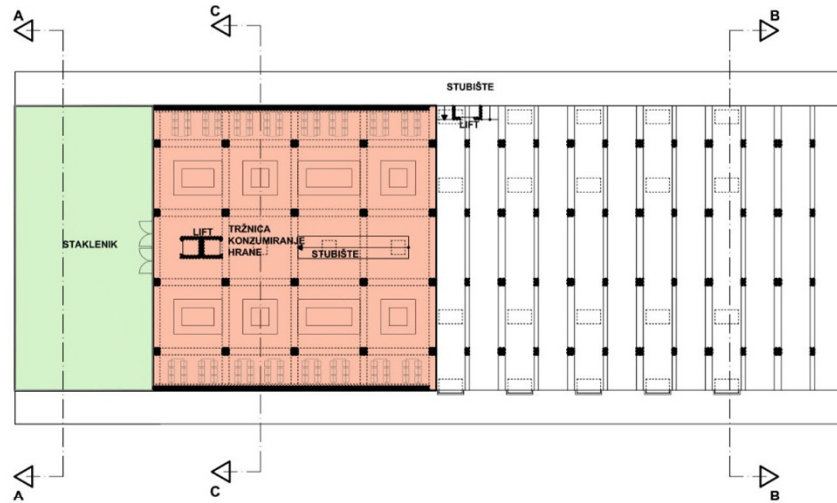




PRESJEK C-C



TLOCRT 2. KATA



# PREDNOSTI

## ZDRAVLJE

- \* Dostupnost zdrave hrane
- \* Edukacija o važnosti zdrave prehrane
- \* Zdrava prehrana
- \* Fizička aktivnost

## SOCIOLOŠKI ASPEKT

- \* Mobilizacija
- \* Edukacija mladih
- \* Integracija starije populacije
- \* Socijalizacija susjeda
- \* Stambene jedinice za socijalno ugroženu skupinu ljudi

## EKOLOGIJA

- \* Zelene površine
- \* Pročišćivanje zraka
- \* Smanjenje emisije CO<sub>2</sub>
- \* Korištenje kišnice
- \* Kompostiranje ostataka hrane
- \* Korištenje obnovljivih izvora energije (solarna i biotermalna)

## EKONOMIJA

- \* Mikroekonomija
- \* Otvaranje novih radnih mjesta
- \* Manja cijena proizvoda jer nema potrebe za skladištenjem i transportom hrane.

















# HVALA V NA PAŽNJI

