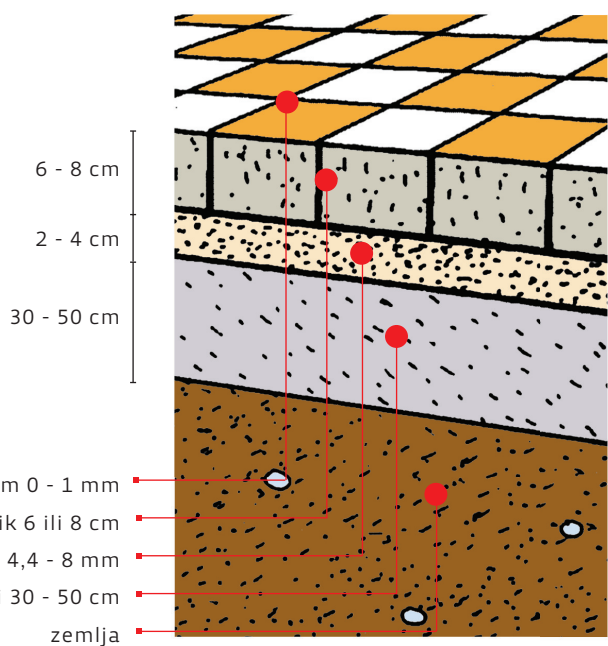
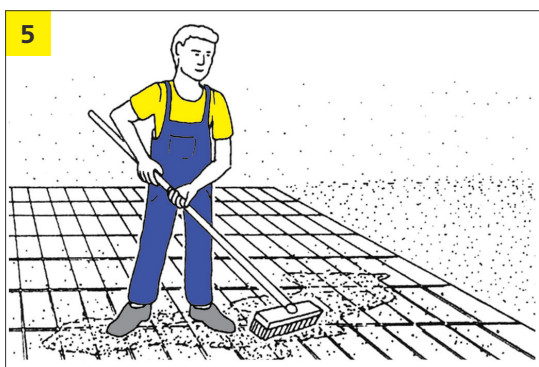
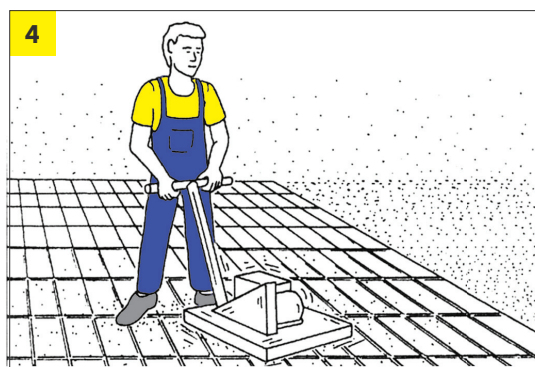
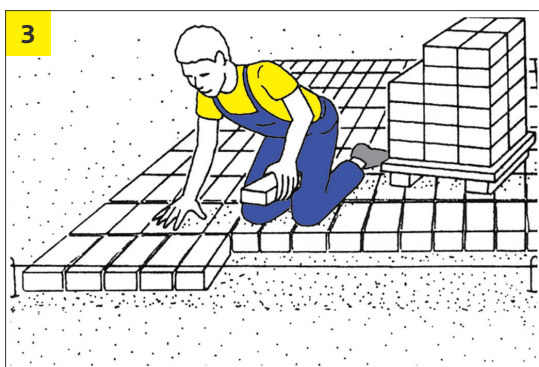
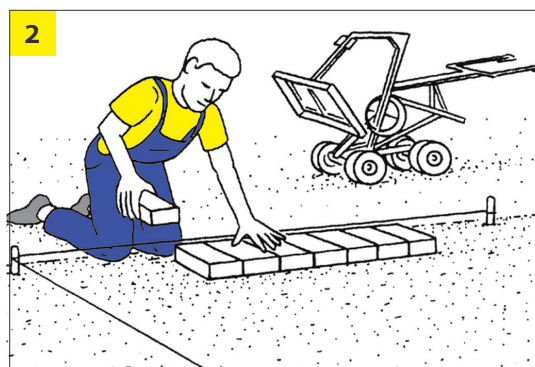
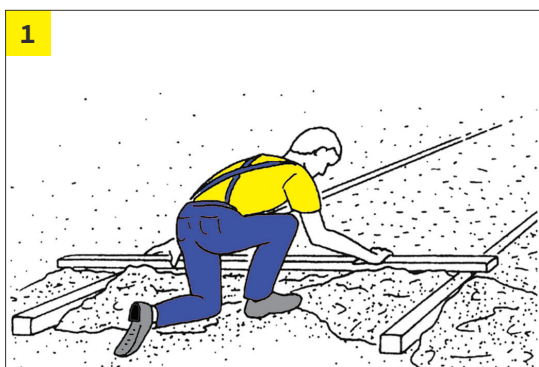
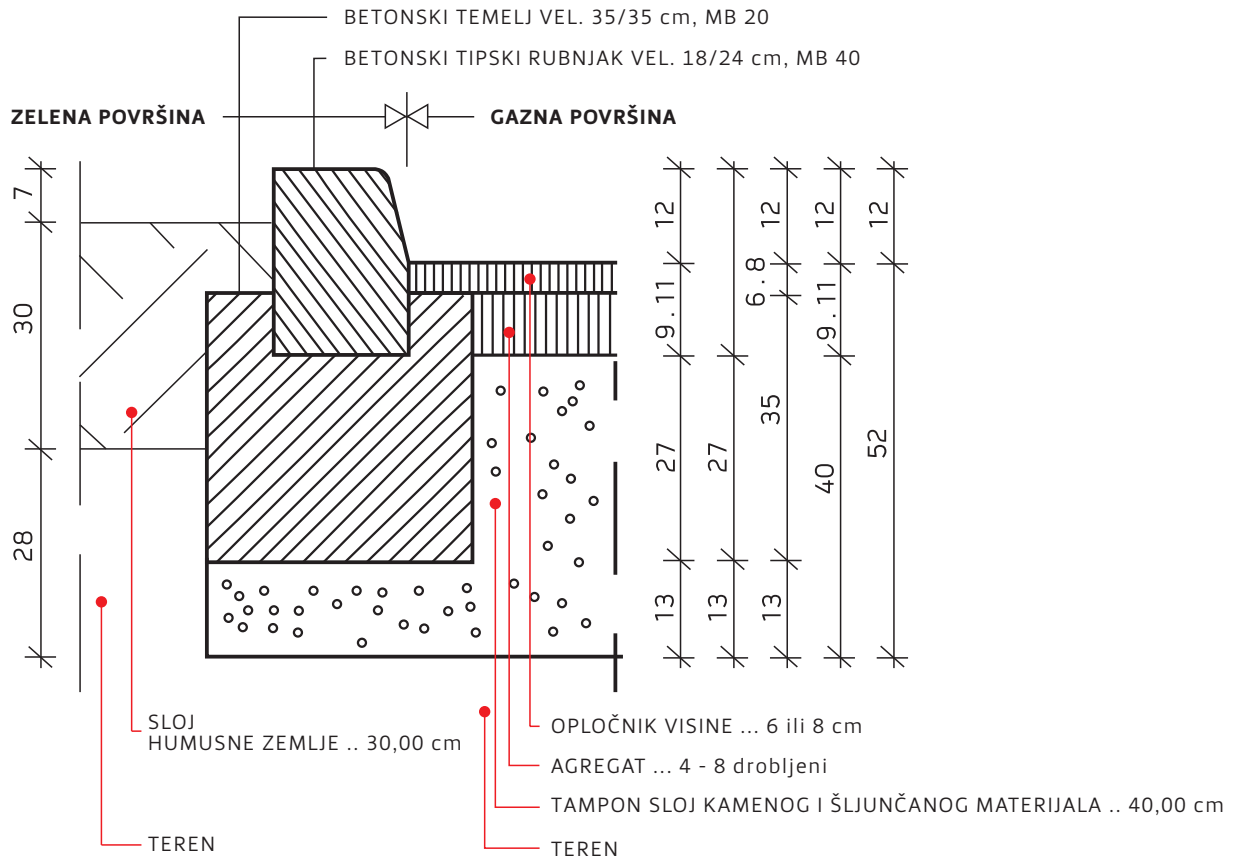


## UPUTE ZA POLAGANJE OPLOČNIKA

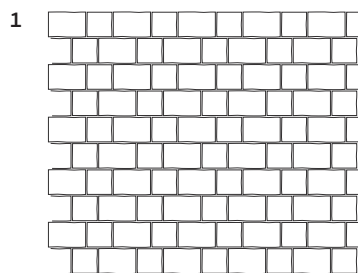


UPUTE ZA UGRADNJU RUBNIKA

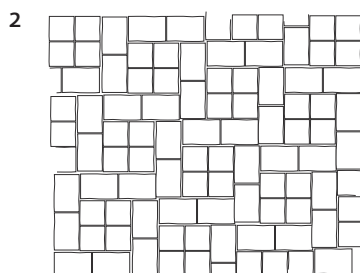
UGRADNJA TIPSKEG BETONSKOG RUBNJAKA PRESJEKA 18/24 cm NA SPOJU PROMETNE I ZELENE POVRŠINE . MJ 1:10



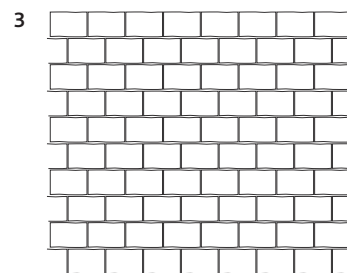
## NAČINI POLAGANJA OPLOČNIKA RHODOS



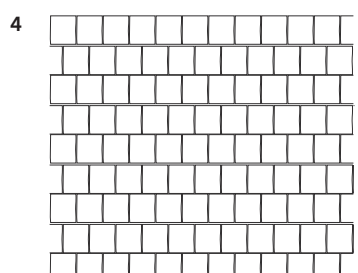
**rhodos 12 x 12** cca 28 kom/m<sup>2</sup>  
**rhodos 18 x 12** cca 28 kom/m<sup>2</sup>



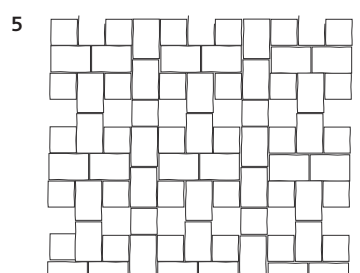
**rhodos 12 x 12** cca 28 kom/m<sup>2</sup>  
**rhodos 18 x 12** cca 28 kom/m<sup>2</sup>



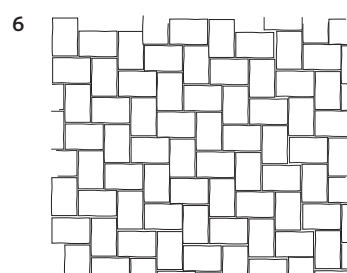
**rhodos 12 x 18** cca 46 kom/m<sup>2</sup>



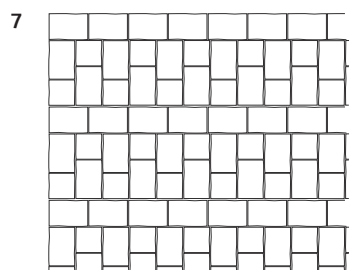
**rhodos 12 x 12** cca 69 kom/m<sup>2</sup>



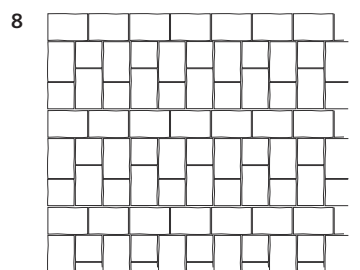
**rhodos 12 x 12** cca 18 kom/m<sup>2</sup>  
**rhodos 18 x 12** cca 34 kom/m<sup>2</sup>



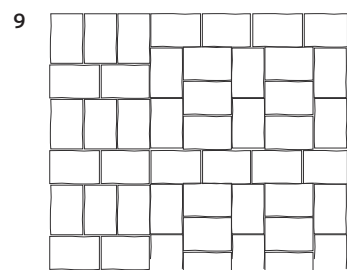
**rhodos 18 x 12** cca 46 kom/m<sup>2</sup>



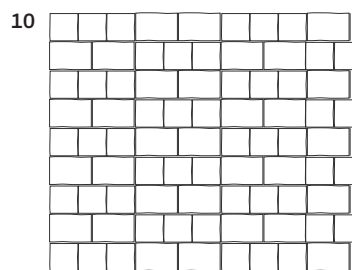
**rhodos 12 x 12** cca 21 kom/m<sup>2</sup>  
**rhodos 18 x 12** cca 36 kom/m<sup>2</sup>



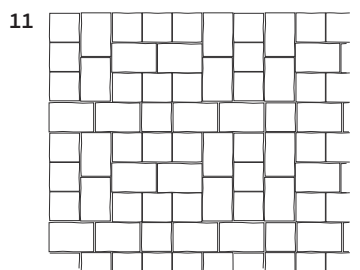
**rhodos 12 x 12** cca 32 kom/m<sup>2</sup>  
**rhodos 18 x 12** cca 29 kom/m<sup>2</sup>



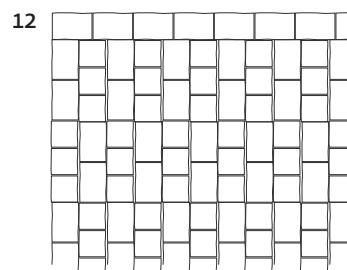
**rhodos 18 x 12** cca 46 kom/m<sup>2</sup>



**rhodos 12 x 12** cca 36 kom/m<sup>2</sup>  
**rhodos 18 x 12** cca 24 kom/m<sup>2</sup>

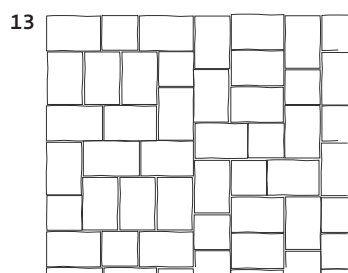


**rhodos 12 x 12** cca 32 kom/m<sup>2</sup>  
**rhodos 18 x 12** cca 29 kom/m<sup>2</sup>

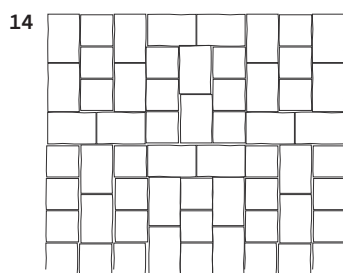


**rhodos 12 x 12** cca 27 kom/m<sup>2</sup>  
**rhodos 18 x 12** cca 32 kom/m<sup>2</sup>

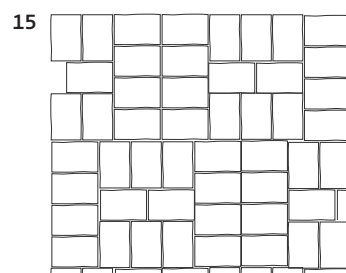
## NAČINI POLAGANJA OPLOČNIKA RHODOS



rhodos 12 x 12 cca 10 kom/m<sup>2</sup>  
rhodos 18 x 12 cca 43 kom/m<sup>2</sup>

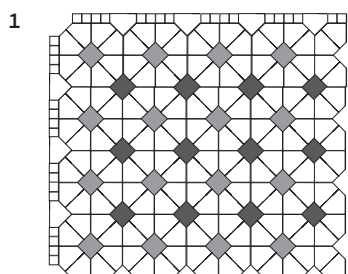


rhodos 12 x 12 cca 27 kom/m<sup>2</sup>  
rhodos 18 x 12 cca 32 kom/m<sup>2</sup>

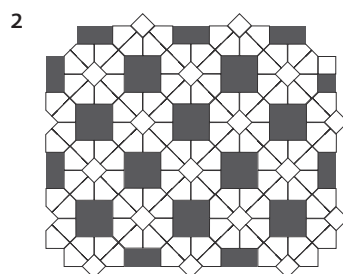


rhodos 18 x 12 cca 46 kom/m<sup>2</sup>

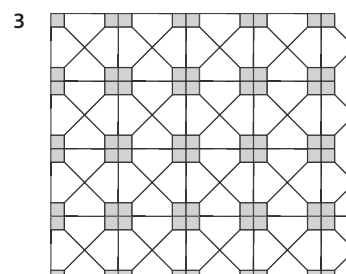
## NAČINI POLAGANJA SISTEMA DOMINO



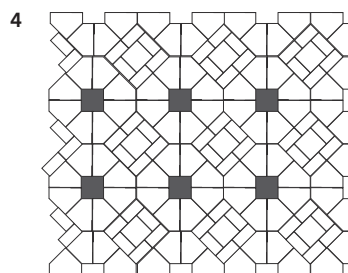
kocka 20 x 20 cca 4,3 kom/m<sup>2</sup>  
kocka 10 x 10 cca 6 kom/m<sup>2</sup>  
biskupska kapa cca 17,3 kom/m<sup>2</sup>  
biskupska kapa cca 1,5 kom/m<sup>2</sup>



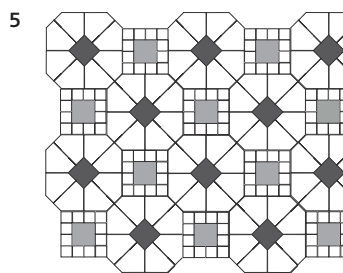
kocka 20 x 20 cca 8,5 kom/m<sup>2</sup>  
biskupska kapa cca 13,7 kom/m<sup>2</sup>



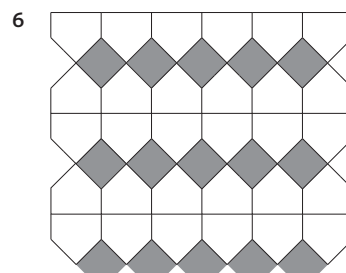
kocka 10 x 10 cca 17 kom/m<sup>2</sup>  
biskupska kapa cca 17 kom/m<sup>2</sup>



kocka 20 x 20 cca 3,4 kom/m<sup>2</sup>  
pravokutnik 10 x 20 cca 10,4 kom/m<sup>2</sup>  
biskupska kapa cca 13,7 kom/m<sup>2</sup>

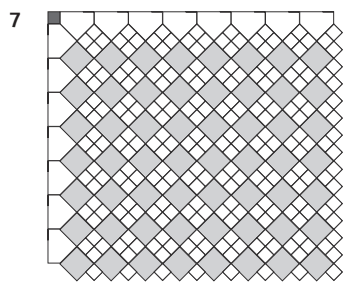


kocka 10 x 10 cca 10 kom/m<sup>2</sup>  
kocka 20 x 20 cca 4 kom/m<sup>2</sup>  
biskupska kapa cca 13 kom/m<sup>2</sup>

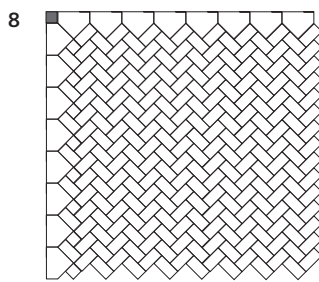


kocka 20 x 20 cca 7,3 kom/m<sup>2</sup>  
biskupska kapa cca 14,5 kom/m<sup>2</sup>

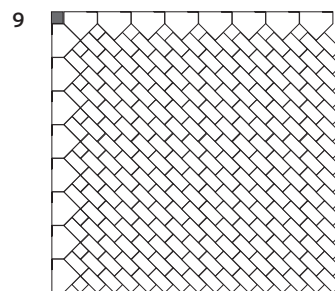
## NAČINI POLAGANJA SISTEMA DOMINO



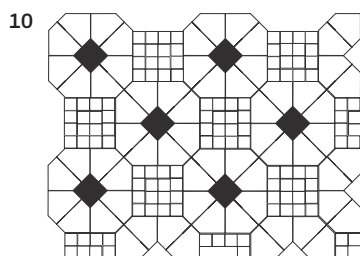
**kocka 10 x 10** cca 49 kom/m<sup>2</sup>  
**kocka 20 x 20** cca 12,25 kom/m<sup>2</sup>  
**biskupska kapa** cca 3,5 kom/m<sup>2</sup>



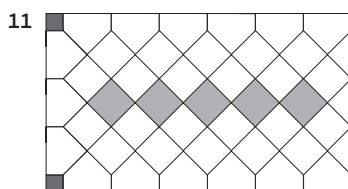
**kocka 10 x 10** cca 3,5 kom/m<sup>2</sup>  
**pravokutnik 10 x 20** cca 49 kom/m<sup>2</sup>  
**biskupska kapa** cca 3,5 kom/m<sup>2</sup>



**kocka 10 x 10** cca 3,5 kom/m<sup>2</sup>  
**pravokutnik 10 x 20** cca 49 kom/m<sup>2</sup>  
**biskupska kapa** cca 3,5 kom/m<sup>2</sup>

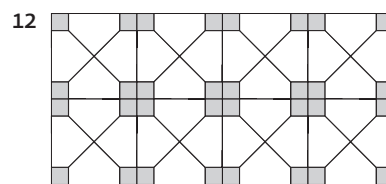


**kocka 10 x 10** cca 26,7 kom/m<sup>2</sup>  
**kocka 20 x 20** cca 1,7 kom/m<sup>2</sup>  
**biskupska kapa** cca 13,4 kom/m<sup>2</sup>



širina staze 104,84 mm

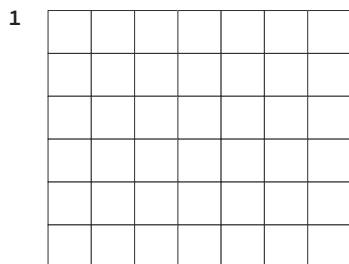
**kocka 20 x 20** cca 17,5 kom/m<sup>2</sup>  
**biskupska kapa** cca 3,5 kom/m<sup>2</sup>



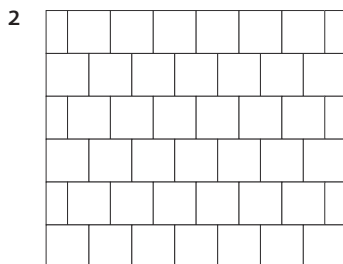
širina staze 96,84 mm

**kocka 10 x 10** cca 17,5 kom/m<sup>2</sup>  
**biskupska kapa** cca 17 kom/m<sup>2</sup>

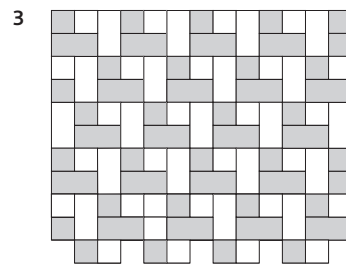
## NAČINI POLAGANJA OPLOČNIKA KOCKA 10 x 10 . KOCKA 20 x 20 . KOCKA 30 x 30 . PRAVOKUTNIK 10 x 20



**kocka 20 x 20** cca 25 kom/m<sup>2</sup>

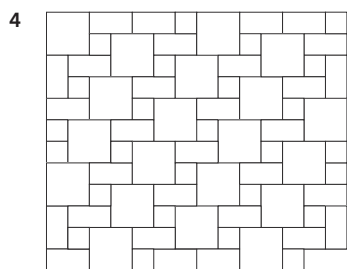


**kocka 20 x 20** cca 25 kom/m<sup>2</sup>  
**pravokutnik 10 x 20** cca 49 kom/m<sup>2</sup>

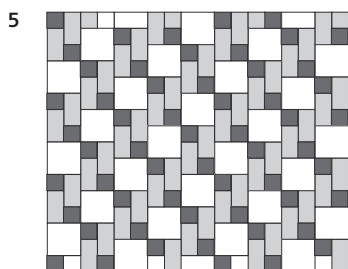


**kocka 10 x 10** cca 33,3 kom/m<sup>2</sup>  
**pravokutnik 10 x 20** cca 33,3 kom/m<sup>2</sup>

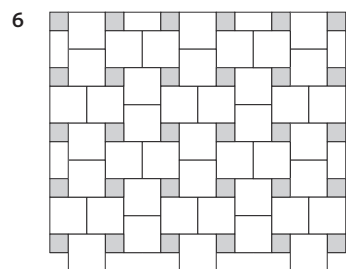
NAČINI POLAGANJA OPLOČNIKA KOCKA 10 x 10 . KOCKA 20 x 20 . KOCKA 30 x 30 . PRAVOKUTNIK 10 x 20



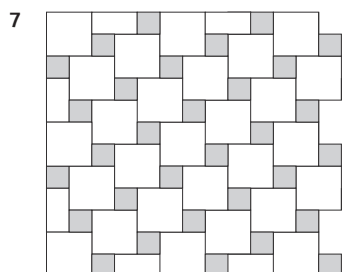
kocka 10 x 10 cca 14,3 kom/m<sup>2</sup>  
kocka 20 x 20 cca 14,3 kom/m<sup>2</sup>  
pravokutnik 10 x 20 cca 14,3 kom/m<sup>2</sup>



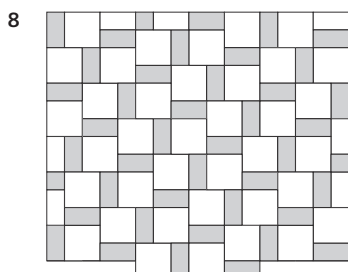
kocka 10 x 10 cca 20 kom/m<sup>2</sup>  
kocka 20 x 20 cca 10 kom/m<sup>2</sup>  
pravokutnik 10 x 20 cca 20 kom/m<sup>2</sup>



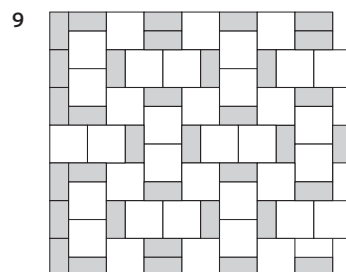
kocka 10 x 10 cca 11,02 kom/m<sup>2</sup>  
kocka 20 x 20 cca 22,03 kom/m<sup>2</sup>  
pravokutnik 10 x 20 cca 1,7 kom/m<sup>2</sup>



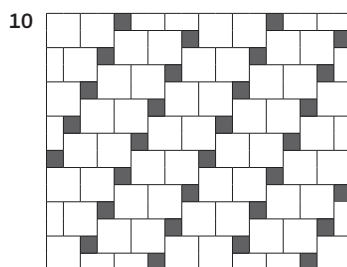
kocka 10 x 10 cca 20 kom/m<sup>2</sup>  
kocka 20 x 20 cca 20 kom/m<sup>2</sup>  
pravokutnik 10 x 20 cca 2 kom/m<sup>2</sup>



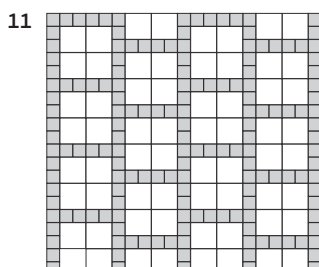
kocka 20 x 20 cca 17 kom/m<sup>2</sup>  
pravokutnik 10 x 20 cca 17 kom/m<sup>2</sup>



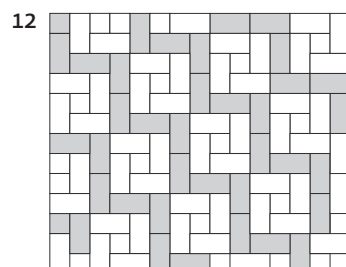
kocka 20 x 20 cca 19 kom/m<sup>2</sup>  
pravokutnik 10 x 20 cca 13 kom/m<sup>2</sup>



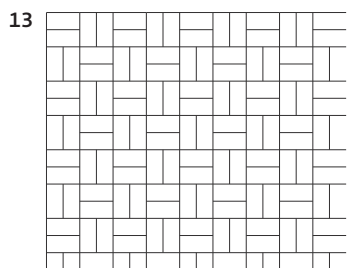
kocka 10 x 10 cca 12 kom/m<sup>2</sup>  
kocka 20 x 20 cca 22 kom/m<sup>2</sup>



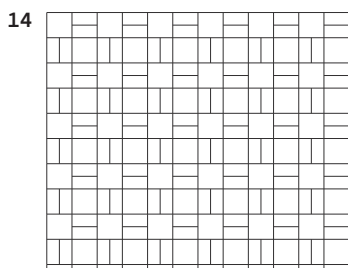
kocka 10 x 10 cca 35 kom/m<sup>2</sup>  
kocka 20 x 20 cca 16 kom/m<sup>2</sup>



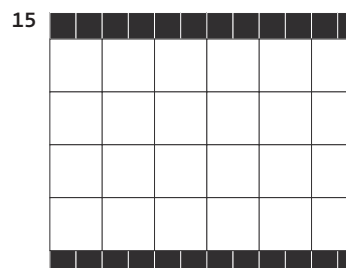
kocka 10 x 10 cca 6,50 kom/m<sup>2</sup>  
pravokutnik 10 x 20 cca 45,7 kom/m<sup>2</sup>



pravokutnik 10 x 20 cca 50 kom/m<sup>2</sup>

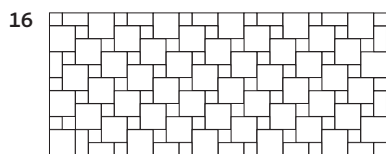


kocka 20 x 20 cca 12,3 kom/m<sup>2</sup>  
pravokutnik 10 x 20 cca 24,3 kom/m<sup>2</sup>



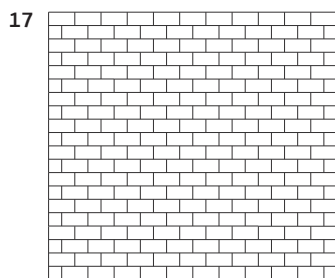
širina staze 1000 mm  
kocka 20 x 20 cca 19,8 kom/m<sup>2</sup>  
kocka 10 x 10 cca 10 kom/m<sup>2</sup>

## NAČINI POLAGANJA OPLOČNIKA

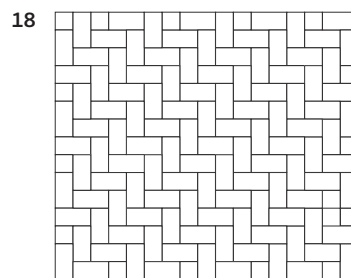


širina staze 1000 mm

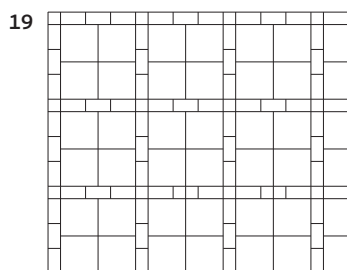
**kocka 20 x 20** cca 17,82 kom/m<sup>2</sup>  
**kocka 10 x 10** cca 19,8 kom/m<sup>2</sup>  
**pravokutnik 10 x 20** cca 3,96 kom/m<sup>2</sup>



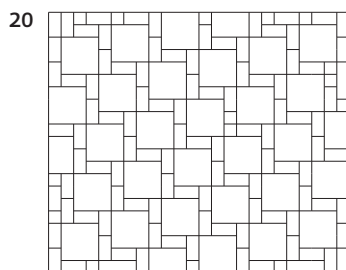
**pravokutnik 10 x 20** cca 50 kom/m<sup>2</sup>  
**kocka 10 x 10** cca 2,5 kom/m<sup>2</sup>



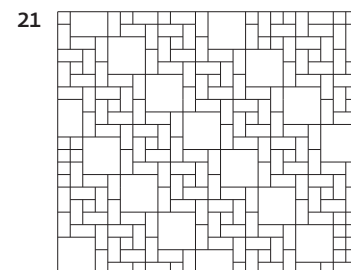
**pravokutnik 10 x 20** cca 50 kom/m<sup>2</sup>  
**kocka 10 x 10** cca 25 kom/m<sup>2</sup>



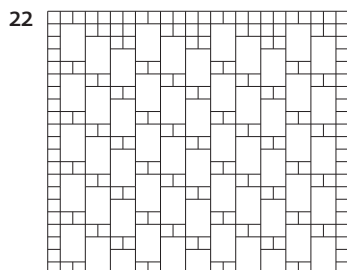
**kocka 30 x 30** cca 8 kom/m<sup>2</sup>  
**kocka 10 x 10** cca 2 kom/m<sup>2</sup>  
**pravokutnik 10 x 20** cca 12 kom/m<sup>2</sup>  
**pravokutnik 10 x 20** cca 4,23 kom/m<sup>2</sup>  
**kocka 10 x 10** cca 1,41 kom/m<sup>2</sup>



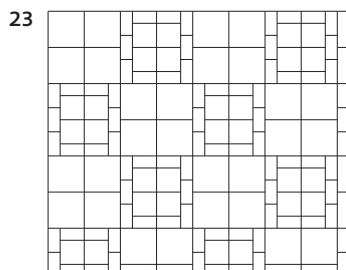
**kocka 30 x 30** cca 6,53 kom/m<sup>2</sup>  
**pravokutnik 10 x 20** cca 19,59 kom/m<sup>2</sup>  
**kocka 10 x 10** cca 1,65 kom/m<sup>2</sup>



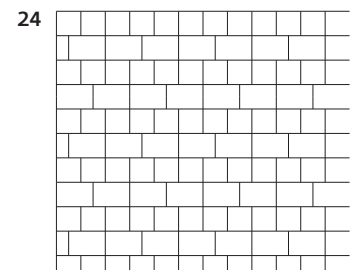
**kocka 30 x 30** cca 3,27 kom/m<sup>2</sup>  
**kocka 10 x 10** cca 3,27 kom/m<sup>2</sup>  
**pravokutnik 10 x 20** cca 32,7 kom/m<sup>2</sup>  
**kocka 10 x 10** cca 1,98 kom/m<sup>2</sup>



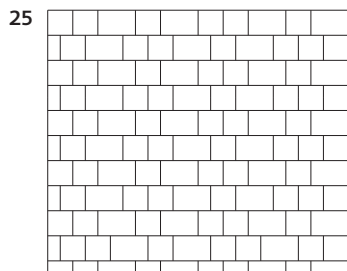
**kocka 30 x 20** cca 12,25 kom/m<sup>2</sup>  
**kocka 10 x 10** cca 24,5 kom/m<sup>2</sup>  
**kocka 10 x 10** cca 19,8 kom/m<sup>2</sup>



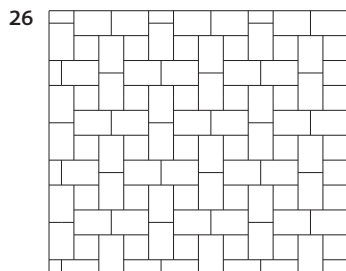
**kocka 30 x 30** cca 5,44 kom/m<sup>2</sup>  
**kocka 20 x 20** cca 5,44 kom/m<sup>2</sup>  
**pravokutnik 10 x 20** cca 13,6 kom/m<sup>2</sup>



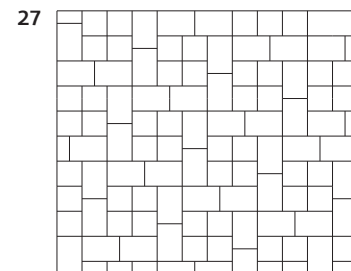
**kocka 30 x 20** cca 8,16 kom/m<sup>2</sup>  
**kocka 20 x 20** cca 12,24 kom/m<sup>2</sup>  
**pravokutnik 10 x 20** cca 1,24 kom/m<sup>2</sup>



**kocka 30 x 20** cca 8,16 kom/m<sup>2</sup>  
**kocka 20 x 20** cca 12,14 kom/m<sup>2</sup>  
**pravokutnik 10 x 20** cca 2,48 kom/m<sup>2</sup>

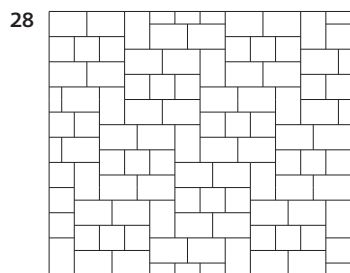


**kocka 30 x 20** cca 12,24 kom/m<sup>2</sup>  
**kocka 20 x 20** cca 6,12 kom/m<sup>2</sup>  
**pravokutnik 10 x 20** cca 1,24 kom/m<sup>2</sup>

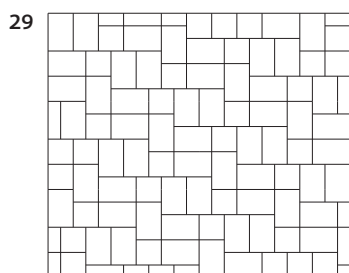


**kocka 30 x 20** cca 9,8 kom/m<sup>2</sup>  
**kocka 20 x 20** cca 9,8 kom/m<sup>2</sup>  
**pravokutnik 10 x 20** cca 0,5 kom/m<sup>2</sup>

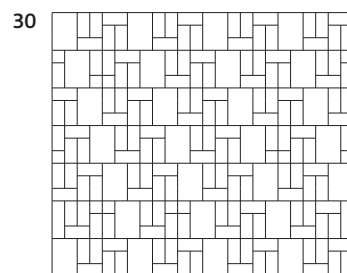
NAČINI POLAGANJA OPLOČNIKA KOCKA 10 x 10 . KOCKA 20 x 20 . KOCKA 30 x 30 . PRAVOKUTNIK 10 x 20



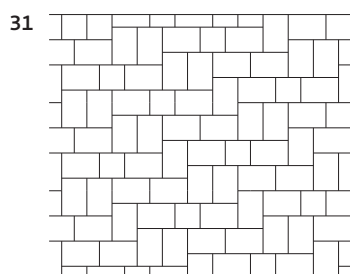
**kocka 30 x 20** cca 11,67 kom/m<sup>2</sup>  
**kocka 20 x 20** cca 7 kom/m<sup>2</sup>  
**pravokutnik 10 x 20** cca 1,54 kom/m<sup>2</sup>



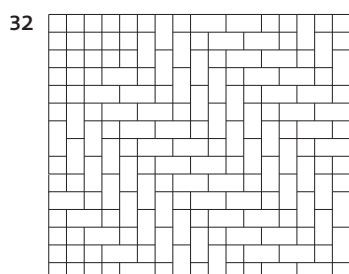
**kocka 30 x 20** cca 12,9 kom/m<sup>2</sup>  
**kocka 20 x 20** cca 5,16 kom/m<sup>2</sup>  
**pravokutnik 10 x 20** cca 1,68 kom/m<sup>2</sup>



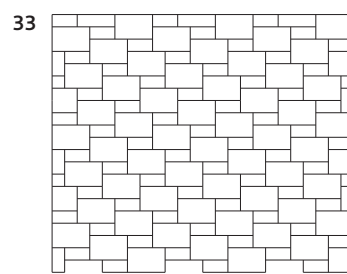
**kocka 30 x 20** cca 5,44 kom/m<sup>2</sup>  
**kocka 20 x 20** cca 5,44 kom/m<sup>2</sup>  
**pravokutnik 10 x 20** cca 21,76 kom/m<sup>2</sup>



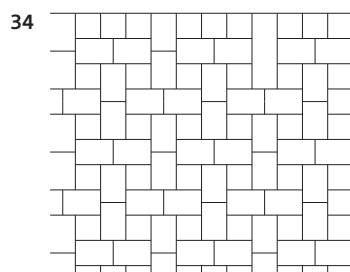
**kocka 30 x 20** cca 14,91 kom/m<sup>2</sup>  
**kocka 20 x 20** cca 2,13 kom/m<sup>2</sup>



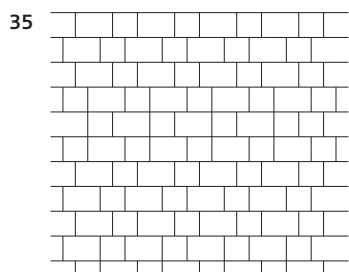
**kocka 10 x 10** cca 20 kom/m<sup>2</sup>  
**pravokutnik 10 x 20** cca 40 kom/m<sup>2</sup>



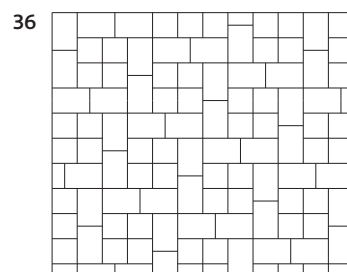
**kocka 30 x 20** cca 12,5 kom/m<sup>2</sup>  
**pravokutnik 10 x 20** cca 12,5 kom/m<sup>2</sup>



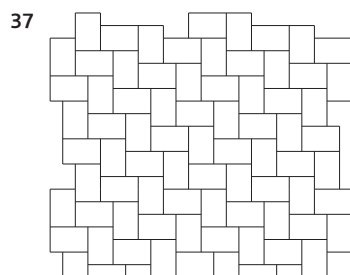
**kocka 30 x 20** cca 12 kom/m<sup>2</sup>  
**kocka 20 x 20** cca 7 kom/m<sup>2</sup>



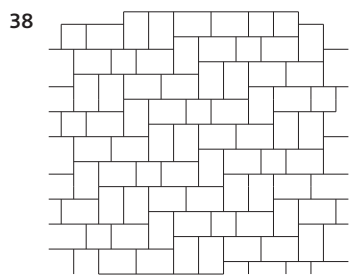
**kocka 30 x 20** cca 10 kom/m<sup>2</sup>  
**kocka 20 x 20** cca 10 kom/m<sup>2</sup>



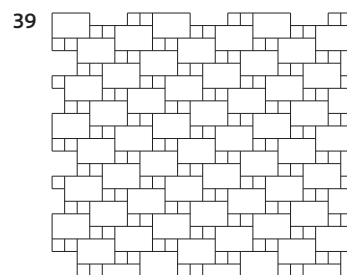
**kocka 30 x 20** cca 9,9 kom/m<sup>2</sup>  
**kocka 20 x 20** cca 10,1 kom/m<sup>2</sup>



**kocka 30 x 20** cca 17 kom/m<sup>2</sup>



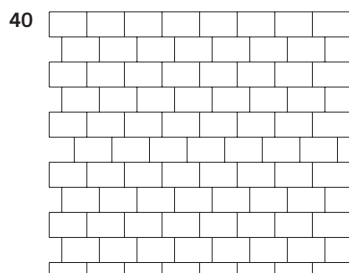
**kocka 30 x 20** cca 15,1 kom/m<sup>2</sup>  
**kocka 20 x 20** cca 2,4 kom/m<sup>2</sup>



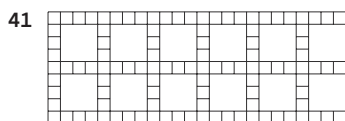
**kocka 30 x 20** cca 12,5 kom/m<sup>2</sup>  
**kocka 10 x 10** cca 25 kom/m<sup>2</sup>



NAČINI POLAGANJA OPLOČNIKA KOCKA 10 x 10 . KOCKA 20 x 20 . KOCKA 30 x 30 . PRAVOKUTNIK 10 x 20

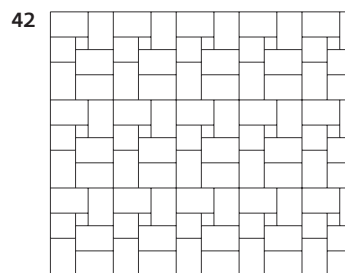


**kocka 30 x 20** cca 17 kom/m<sup>2</sup>

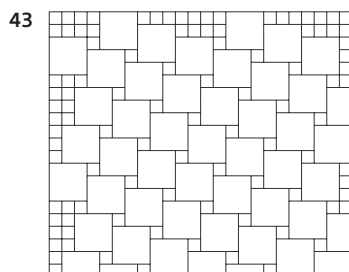


širina staze 900 mm

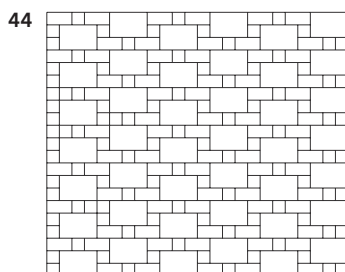
**kocka 30 x 30** cca 9,96 kom/m<sup>2</sup>  
**kocka 10 x 10** cca 44,64 kom/m<sup>2</sup>



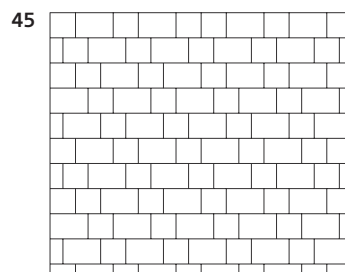
**kocka 30 x 20** cca 14 kom/m<sup>2</sup>  
**kocka 20 x 20** cca 2,8 kom/m<sup>2</sup>  
**kocka 10 x 10** cca 2,8 kom/m<sup>2</sup>



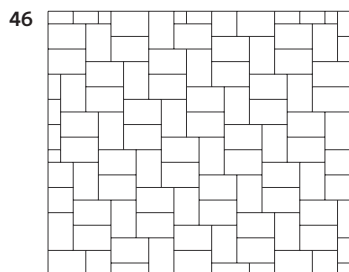
**kocka 30 x 30** cca 9,8 kom/m<sup>2</sup>  
**kocka 10 x 10** cca 9,8 kom/m<sup>2</sup>  
**kocka 10 x 10** cca 8,91 kom/m<sup>2</sup>



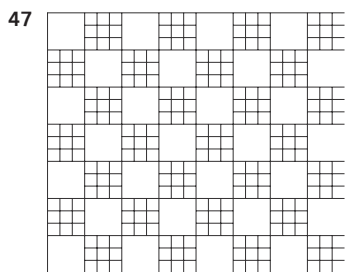
**kocka 30 x 20** cca 8,16 kom/m<sup>2</sup>  
**kocka 10 x 10** cca 16,32 kom/m<sup>2</sup>  
**pravokutnik 10 x 20** cca 16,32 kom/m<sup>2</sup>  
**kocka 10 x 10** cca 3,3 kom/m<sup>2</sup>



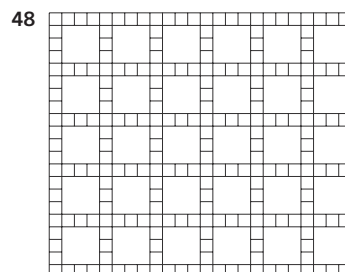
**kocka 30 x 20** cca 9,8 kom/m<sup>2</sup>  
**kocka 20 x 20** cca 9,8 kom/m<sup>2</sup>  
**pravokutnik 10 x 20** cca 1,98 kom/m<sup>2</sup>



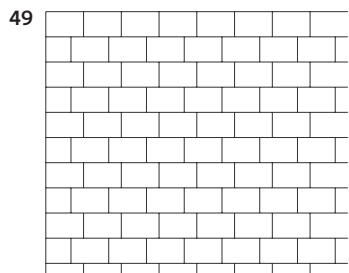
**kocka 30 x 20** cca 16,5 kom/m<sup>2</sup>  
**kocka 10 x 10** cca 0,83 kom/m<sup>2</sup>  
**kocka 20 x 20** cca 0,83 kom/m<sup>2</sup>  
**pravokutnik 10 x 20** cca 1,66 kom/m<sup>2</sup>



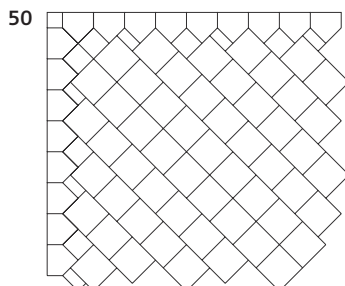
**kocka 30 x 30** cca 5,44 kom/m<sup>2</sup>  
**kocka 10 x 10** cca 48,96 kom/m<sup>2</sup>



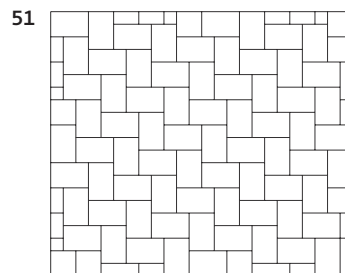
**kocka 30 x 30** cca 6,13 kom/m<sup>2</sup>  
**kocka 10 x 10** cca 42,91 kom/m<sup>2</sup>  
**kocka 10 x 10** cca 9,9 kom/m<sup>2</sup>



**kocka 30 x 20** cca 16,5 kom/m<sup>2</sup>  
**kocka 20 x 20** cca 2,48 kom/m<sup>2</sup>

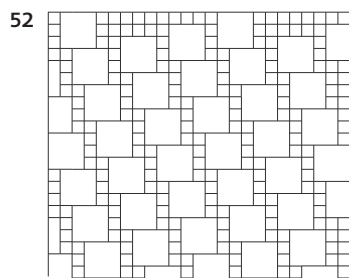


**kocka 30 x 30** cca 11 kom/m<sup>2</sup>  
**biskupska kapa** cca 3,5 kom/m<sup>2</sup>  
**kocka 20 x 20** cca 1,17 kom/m<sup>2</sup>  
**pravokutnik 10 x 20** cca 1,17 kom/m<sup>2</sup>

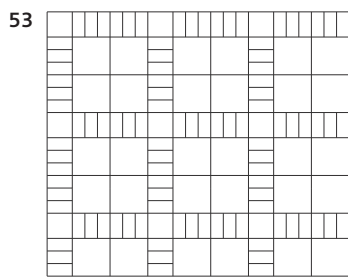


**kocka 30 x 20** cca 16,5 kom/m<sup>2</sup>  
**kocka 20 x 20** cca 0,83 kom/m<sup>2</sup>  
**kocka 10 x 10** cca 0,83 kom/m<sup>2</sup>  
**pravokutnik 10 x 20** cca 1,66 kom/m<sup>2</sup>

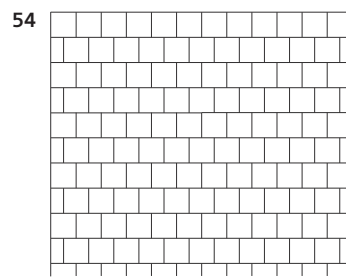
NAČINI POLAGANJA OPLOČNIKA KOCKA 10 x 10 . KOCKA 20 x 20 . KOCKA 30 x 30 . PRAVOKUTNIK 10 x 20



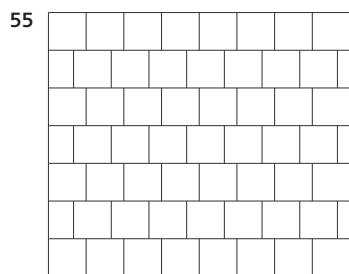
**kocka 30 x 30** cca 7,54 kom/m<sup>2</sup>  
**kocka 10 x 10** cca 30,16 kom/m<sup>2</sup>  
**kocka 10 x 10** cca 9,14 kom/m'



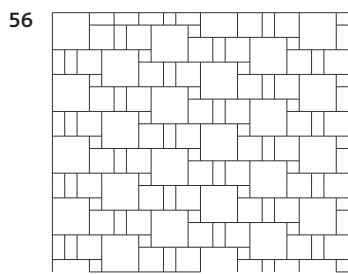
**kocka 30 x 30** cca 6,12 kom/m<sup>2</sup>  
**kocka 20 x 20** cca 1,53 kom/m<sup>2</sup>  
**pravokutnik 10 x 20** cca 18,36 kom/m<sup>2</sup>



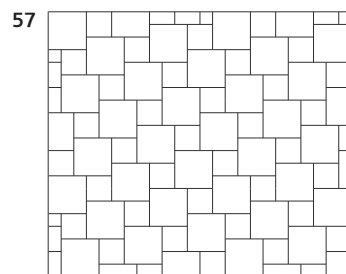
**kocka 20 x 20** cca 24,5 kom/m<sup>2</sup>  
**pravokutnik 10 x 20** cca 2,48 kom/m'



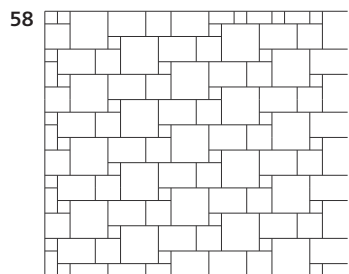
**kocka 30 x 30** cca 11 kom/m<sup>2</sup>  
**kocka 30 x 20** cca 1,65 kom/m'



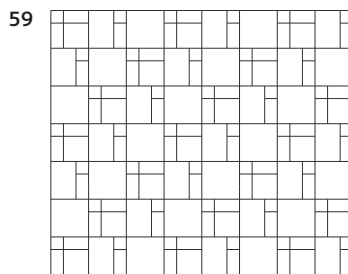
**kocka 30 x 30** cca 4,9 kom/m<sup>2</sup>  
**kocka 20 x 20** cca 9,8 kom/m<sup>2</sup>  
**kocka 10 x 10** cca 4,9 kom/m<sup>2</sup>  
**pravokutnik 10 x 20** cca 4,9 kom/m<sup>2</sup>  
**kocka 10 x 10** cca 4,46 kom/m'



**kocka 30 x 30** cca 7,54 kom/m<sup>2</sup>  
**kocka 20 x 20** cca 7,54 kom/m<sup>2</sup>  
**kocka 20 x 20** cca 0,83 kom/m'  
**kocka 10 x 10** cca 1,24 kom/m'  
**pravokutnik 10 x 20** cca 1,66 kom/m'

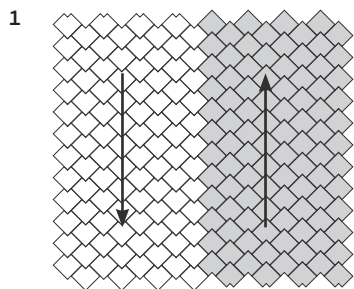


**kocka 30 x 30** cca 4,9 kom/m<sup>2</sup>  
**kocka 30 x 20** cca 4,9 kom/m<sup>2</sup>  
**kocka 20 x 20** cca 4,9 kom/m<sup>2</sup>  
**kocka 10 x 10** cca 4,9 kom/m<sup>2</sup>  
**kocka 10 x 10** cca 2,6 kom/m'  
**pravokutnik 10 x 20** cca 2,6 kom/m'

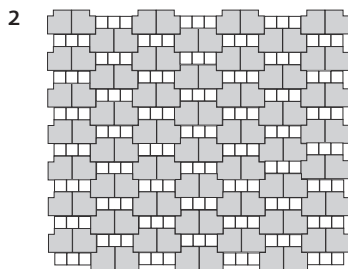


**kocka 30 x 30** cca 3,63 kom/m<sup>2</sup>  
**kocka 30 x 20** cca 3,63 kom/m<sup>2</sup>  
**kocka 20 x 20** cca 3,63 kom/m<sup>2</sup>  
**kocka 10 x 10** cca 7,26 kom/m<sup>2</sup>  
**pravokutnik 10 x 20** cca 10,89 kom/m<sup>2</sup>

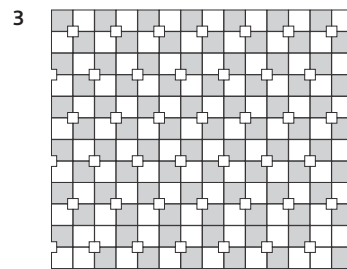
## NAČINI POLAGANJA OPLOČNIKA EKO KOCKA



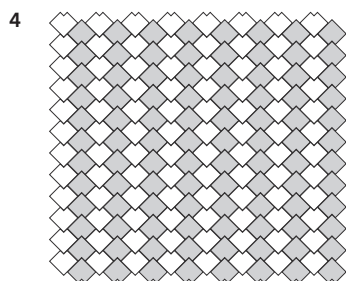
eko kocka cca 26 kom/m<sup>2</sup>  
**SISTEM S KOMORAMA**  
**zatvoreni dijagonalni vez**



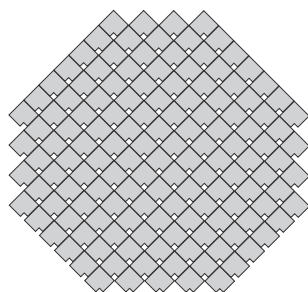
eko kocka cca 18,7 kom/m<sup>2</sup>  
**kocka 10 x 10 cca 28 kom/m<sup>2</sup>**



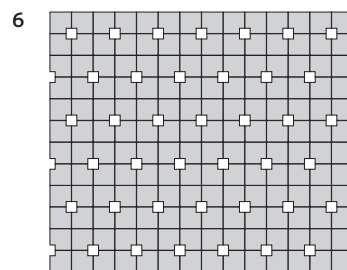
eko kocka cca 12,5 kom/m<sup>2</sup>  
**eko kocka boja cca 12,5 kom/m<sup>2</sup>**  
**kocka 10 x 10 cca 6,25 kom/m<sup>2</sup>**



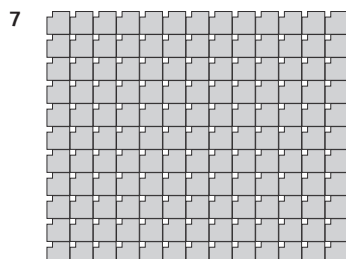
eko kocka cca 26 kom/m<sup>2</sup>



eko kocka cca 24,4 kom/m<sup>2</sup>



eko kocka cca 25 kom/m<sup>2</sup>  
**kocka 10 x 10 cca 6,25 kom/m<sup>2</sup>**



eko kocka cca 25 kom/m<sup>2</sup>  
**SISTEM SA RUPOM**  
**POMOĆU EKO KOCKE**  
**eko redni vez**

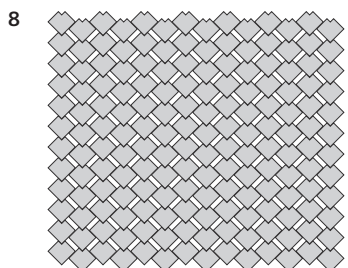
za najveća opterećenja

kompaktni otvori za  
 otjecanje vode

velika zatvorena površine  
 za hodanje

8 - 9% > 440L

Execk normalni



eko kocka cca 22,4 kom/m<sup>2</sup>  
**SISTEM S KOMORAMA**  
**eko dijagonalni vez 1**

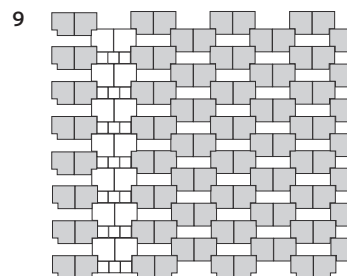
kose 5 cm široke dijagonalne  
 fuge za otjecanje vode

integriranje punih površina za  
 lakše hodanje

velika zatvorena površine  
 za hodanje

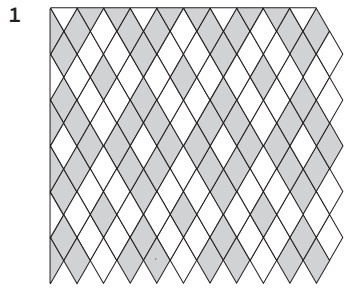
- 14% > 500L

dijagonalni vez i ovdje  
 osigurava dobar osjećaj kod  
 vožnje i kotrljanja

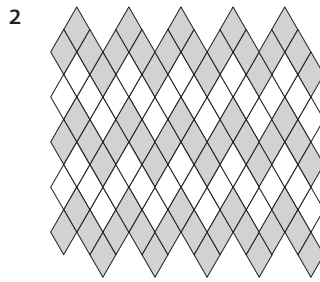


eko kocka cca 18,7 kom/m<sup>2</sup>  
**kocka 10 x 10 cca 28 kom/m<sup>2</sup>**

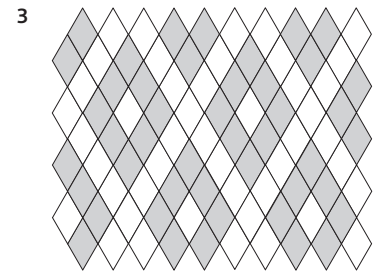
## NAČINI POLAGANJA OPLOČNIKA ROMB



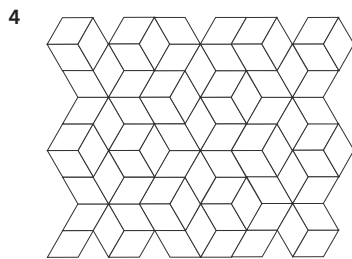
**romb** cca 29 kom/m<sup>2</sup>  
**boje** 1:1



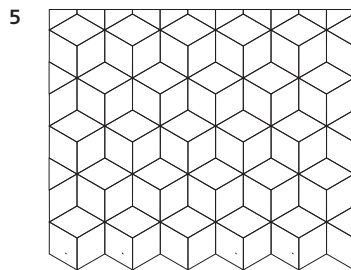
**romb** cca 29 kom/m<sup>2</sup>  
**boje** 1:1



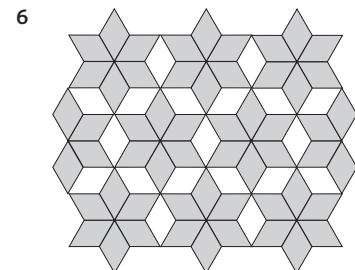
**romb** cca 29 kom/m<sup>2</sup>  
**boje** 1:1



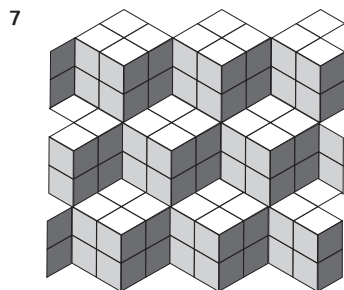
**romb** cca 29 kom/m<sup>2</sup>



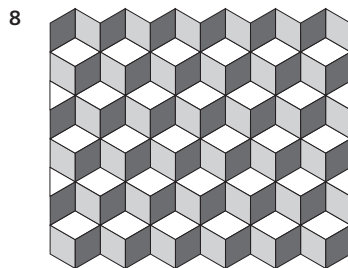
**romb** cca 29 kom/m<sup>2</sup>



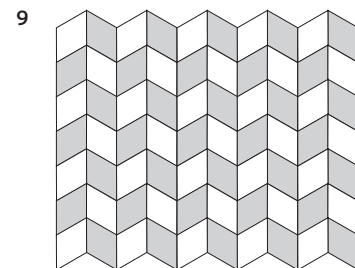
**romb** cca 29 kom/m<sup>2</sup>  
**boje** 1:2



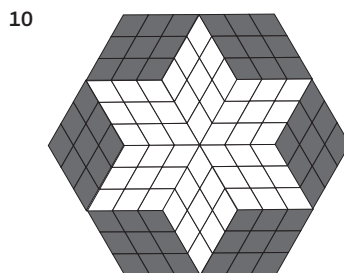
**romb** cca 29 kom/m<sup>2</sup>  
**1:1:1**



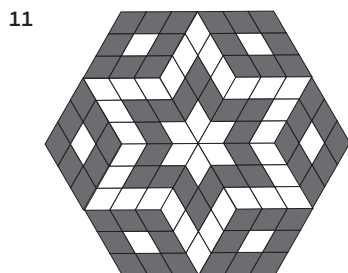
**romb** cca 29 kom/m<sup>2</sup>  
**1:1:1**



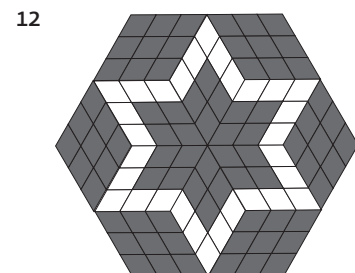
**romb** cca 29 kom/m<sup>2</sup>  
**1:1:1**



**romb 1 boja** cca 9,5 kom/m<sup>2</sup>  
**romb 2 boja** cca 19 kom/m<sup>2</sup>



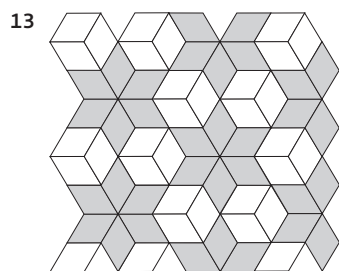
**romb 1 boja** cca 13,8 kom/m<sup>2</sup>  
**romb 2 boja** cca 15 kom/m<sup>2</sup>



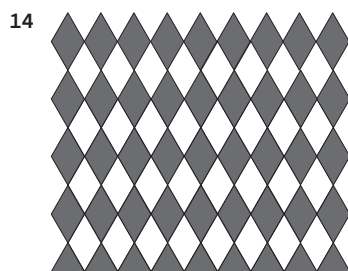
**romb 1 boja** cca 13,8 kom/m<sup>2</sup>  
**romb 2 boja** cca 15 kom/m<sup>2</sup>

## NAČINI POLAGANJA OPLOČNIKA ROMB

---



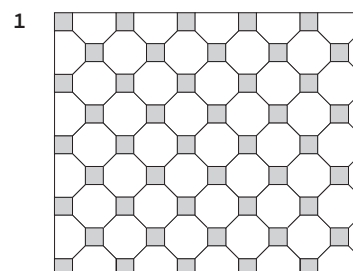
**romb** cca 29 kom/m<sup>2</sup>  
**boje** 1:2



**romb** cca 29 kom/m<sup>2</sup>  
**boje** 1:1

## NAČINI POLAGANJA OPLOČNIKA OKTAVO

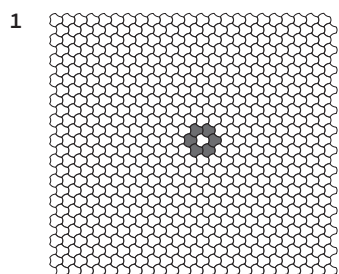
---



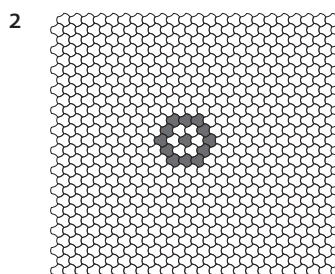
**oktavo** cca 20,6 kom/m<sup>2</sup>  
**kocka 10 x 10** cca 20,8 kom/m<sup>2</sup>  
**polovice** 4,5 kom/m<sup>2</sup>

## NAČINI POLAGANJA OPLOČNIKA LEPEZA

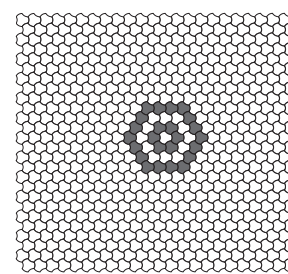
---



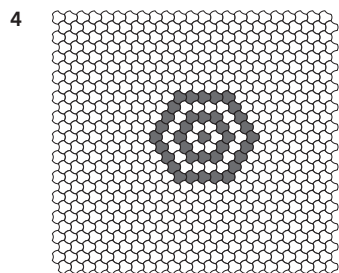
**lepeza** cca 37 kom/m<sup>2</sup>  
**6 komada u boji**



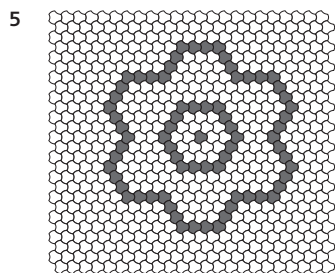
**lepeza** cca 37 kom/m<sup>2</sup>  
**13 komada u boji**



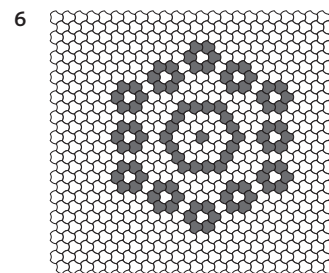
**lepeza** cca 37 kom/m<sup>2</sup>  
**24 komada u boji**



**lepeza** cca 37 kom/m<sup>2</sup>  
**37 komada u boji**



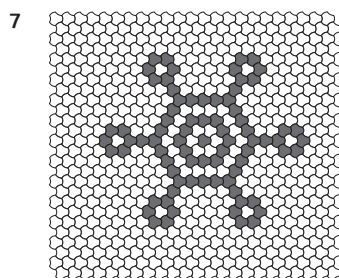
**lepeza** cca 37 kom/m<sup>2</sup>  
**73 komada u boji**



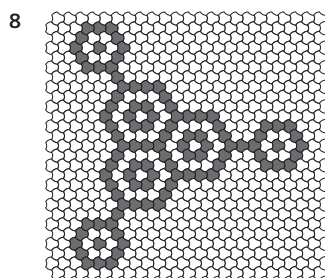
**lepeza** cca 37 kom/m<sup>2</sup>  
**96 komada u boji**

## NAČINI POLAGANJA OPLOČNIKA LEPEZA

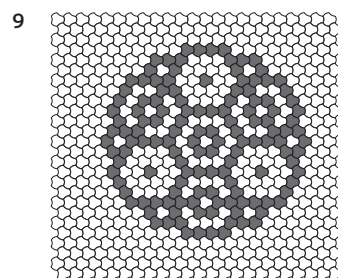
---



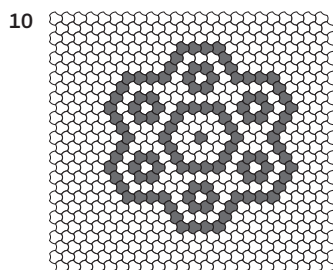
lepeza cca 37 kom/m<sup>2</sup>  
79 komada u boji



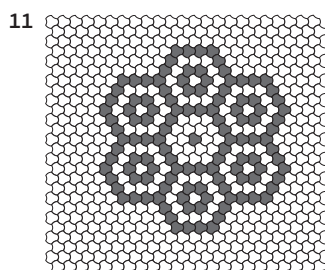
lepeza cca 37 kom/m<sup>2</sup>  
100 komada u boji



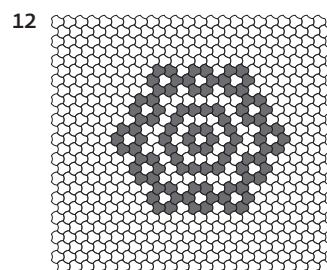
lepeza cca 37 kom/m<sup>2</sup>  
145 komada u boji



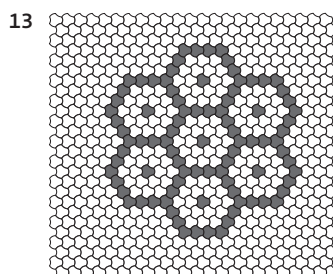
lepeza cca 37 kom/m<sup>2</sup>  
121 komada u boji



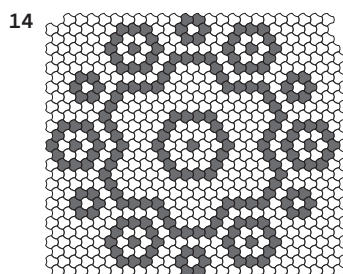
lepeza cca 37 kom/m<sup>2</sup>  
96 komada u boji



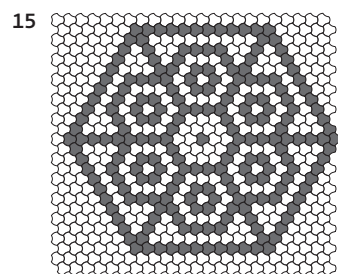
lepeza cca 37 kom/m<sup>2</sup>  
96 komada u boji



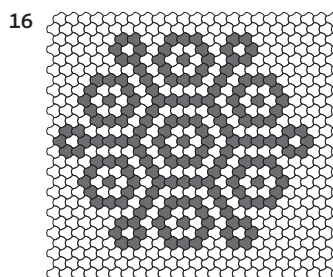
lepeza cca 37 kom/m<sup>2</sup>  
91 komada u boji



lepeza cca 37 kom/m<sup>2</sup>  
187 komada u boji



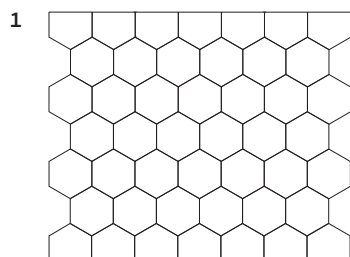
lepeza cca 37 kom/m<sup>2</sup>  
211 komada u boji



lepeza cca 37 kom/m<sup>2</sup>  
175 komada u boji

## NAČINI POLAGANJA OPLOČNIK ŠESTEROKUT

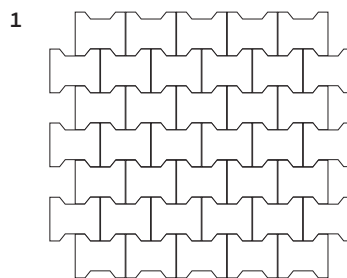
---



**šesterokut** cca 29 kom/m<sup>2</sup>  
polovice cca 3 kom/m'

## NAČINI POLAGANJA OPLOČNIKA "H"

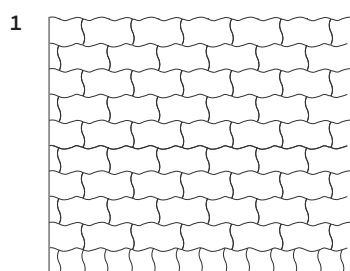
---



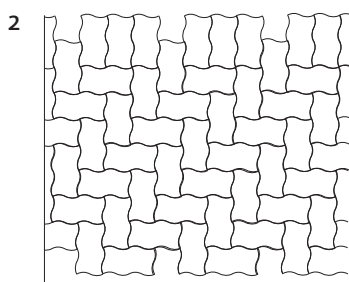
**"H"** cca 29 kom/m<sup>2</sup>

## NAČINI POLAGANJA OPLOČNIKA OŠTRI "S"

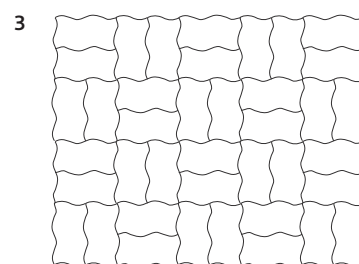
---



**oštri "S"** cca 39 kom/m<sup>2</sup>



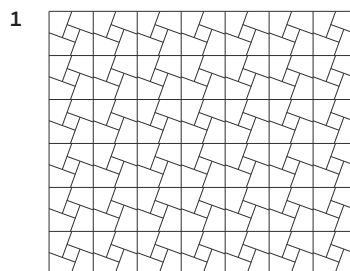
**oštri "S"** cca 39 kom/m<sup>2</sup>



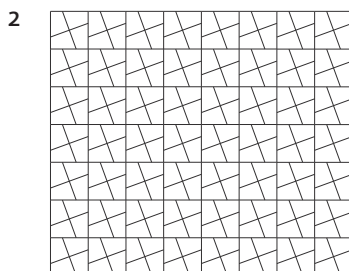
**oštri "S"** cca 39 kom/m<sup>2</sup>

## NAČINI POLAGANJA OPLOČNIKA TRAPEZ

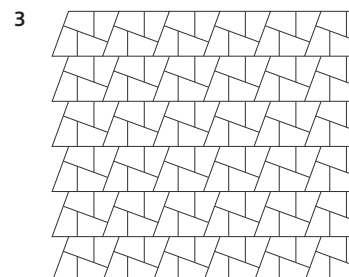
---



**trapez** cca 38 kom/m<sup>2</sup>  
**kocka 10 x 10 x 6** cca 10 kom/m<sup>2</sup>

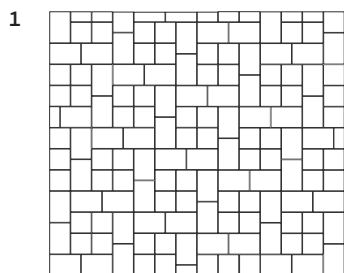


**trapez** cca 42 kom/m<sup>2</sup>

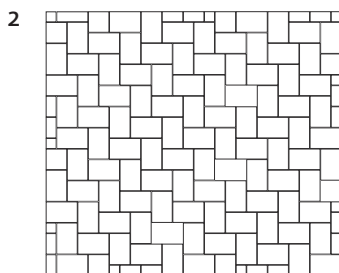


**trapez** cca 42 kom/m<sup>2</sup>

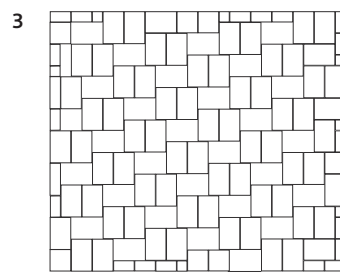
## NAČINI POLAGANJA OPLOČNIKA KOCKA 30 x 20



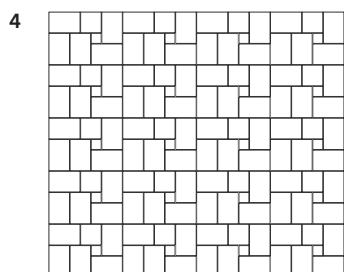
kocka 20 x 30 cca 9,9 kom/m<sup>2</sup>  
kocka 20 x 20 cca 10,1 kom/m<sup>2</sup>



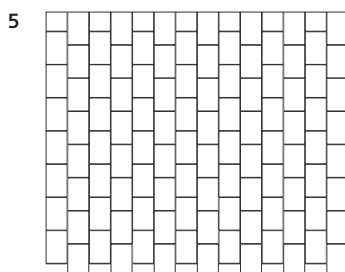
kocka 20 x 30 cca 16,5 kom/m<sup>2</sup>  
kocka 20 x 20 cca 0,83 kom/m<sup>2</sup>  
kocka 10 x 10 cca 0,83 kom/m<sup>2</sup>  
pravokutnik 10 x 20 cca 1,66 kom/m<sup>2</sup>



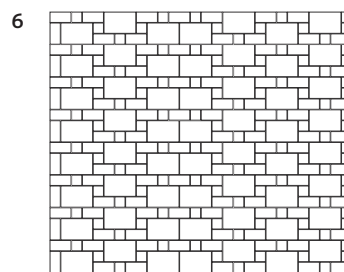
kocka 20 x 30 cca 16,5 kom/m<sup>2</sup>  
kocka 20 x 20 cca 0,83 kom/m<sup>2</sup>  
kocka 10 x 10 cca 0,83 kom/m<sup>2</sup>  
pravokutnik 10 x 20 cca 1,66 kom/m<sup>2</sup>



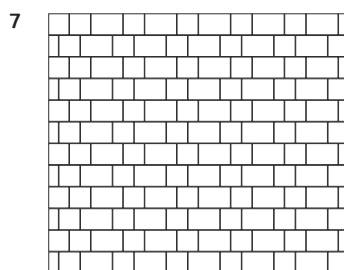
kocka 20 x 30 cca 14 kom/m<sup>2</sup>  
kocka 20 x 20 cca 2,8 kom/m<sup>2</sup>  
kocka 10 x 10 cca 2,88 kom/m<sup>2</sup>



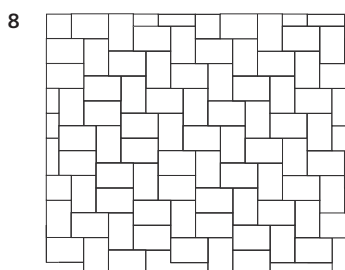
kocka 20 x 30 cca 16,5 kom/m<sup>2</sup>  
kocka 20 x 20 cca 2,48 kom/m<sup>2</sup>



kocka 20 x 30 cca 8,16 kom/m<sup>2</sup>  
kocka 10 x 10 cca 16,32 kom/m<sup>2</sup>  
pravokutnik 10 x 20 cca 16,32 kom/m<sup>2</sup>  
kocka 10 x 10 cca 3,3 kom/m<sup>2</sup>



kocka 20 x 30 cca 10 kom/m<sup>2</sup>  
kocka 20 x 20 cca 10 kom/m<sup>2</sup>



kocka 20 x 30 cca 15,3 kom/m<sup>2</sup>  
kocka 20 x 20 cca 5,1 kom/m<sup>2</sup>